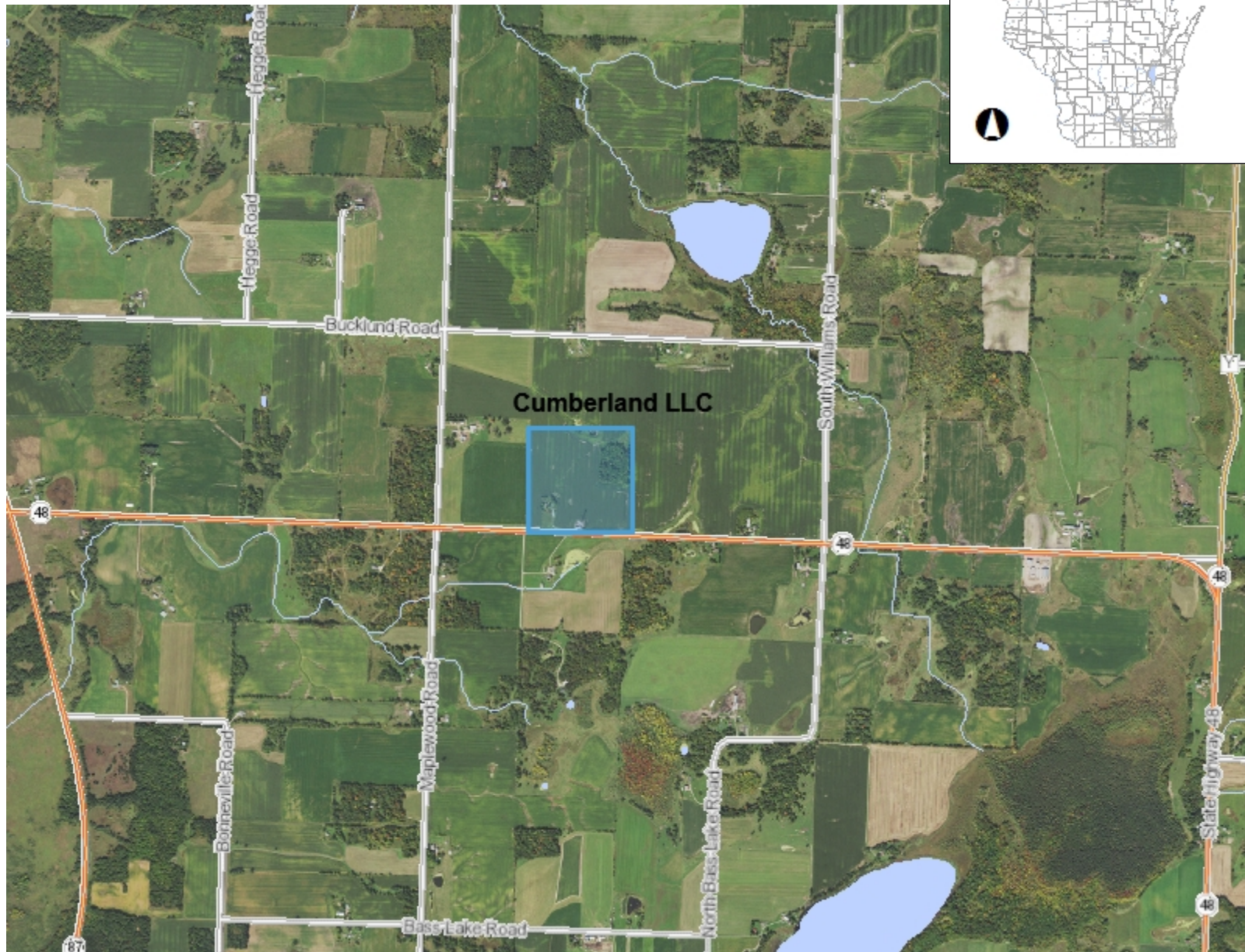




Cumberland LLC Surface Water



Legend

- Municipality
- State Boundaries
- County Boundaries
- Major Roads
 - Interstate Highway
 - State Highway
 - US Highway
- County and Local Roads
 - County HWY
 - Local Road
- Railroads
- Tribal Lands
- Rivers and Streams
- Intermittent Streams
- Lakes and Open water

0.8 0 0.38 0.8 Miles

NAD_1983_HARN_Wisconsin_TM

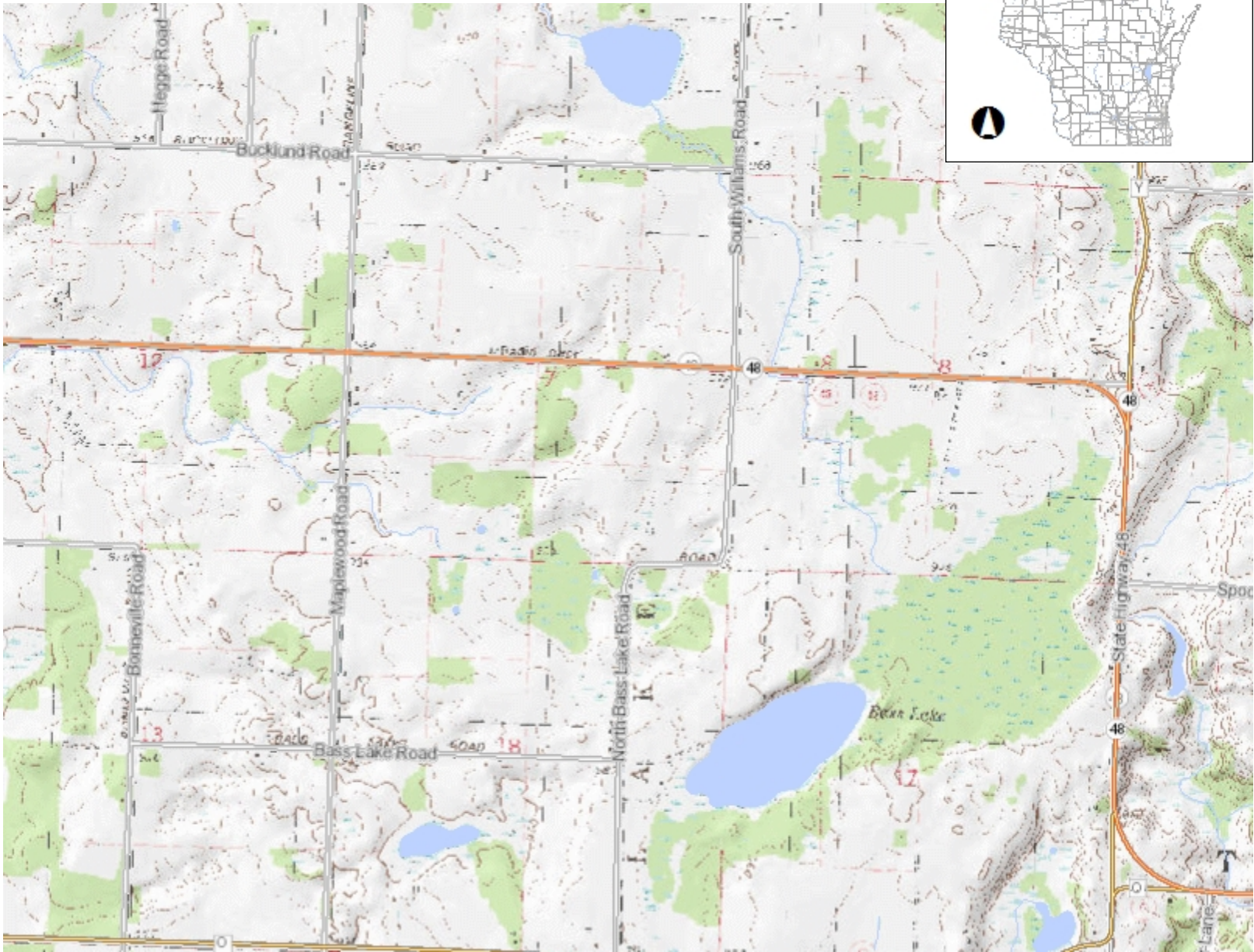
1: 23,760

DISCLAIMER: The information shown on these maps has been obtained from various sources, and are of varying age, reliability and resolution. These maps are not intended to be used for navigation, nor are these maps an authoritative source of information about legal land ownership or public access. No warranty, expressed or implied, is made regarding accuracy, applicability for a particular use, completeness, or legality of the information depicted on this map. For more information, see the DNR Legal Notices web page: <http://dnr.wi.gov/legal/>

Notes



Cumberland LLC Hog Farm



Legend

- Municipality
- State Boundaries
- County Boundaries
- Major Roads
 - Interstate Highway
 - State Highway
 - US Highway
- County and Local Roads
 - County HWY
 - Local Road
- Railroads
- Tribal Lands
- Rivers and Streams
- Intermittent Streams
- Lakes and Open water
- 24K USGS Quad Index - Level 7 - 16

0.8 0 0.38 0.8 Miles

NAD_1983_HARN_Wisconsin_TM

1: 23,760

DISCLAIMER: The information shown on these maps has been obtained from various sources, and are of varying age, reliability and resolution. These maps are not intended to be used for navigation, nor are these maps an authoritative source of information about legal land ownership or public access. No warranty, expressed or implied, is made regarding accuracy, applicability for a particular use, completeness, or legality of the information depicted on this map. For more information, see the DNR Legal Notices web page: <http://dnr.wi.gov/legal/>

Notes



Cumberland LLC - FEMA Flood Hazard Map



Legend

- FIRM Panels
- Cross-Sections
- Flood Hazard Boundaries
 - Other Boundaries
 - Limit Lines
 - SFHA / Flood Zone Boundary
- Flood Hazard Zones**
 - 1% Annual Chance Flood Hazard
 - Regulatory Floodway
 - Special Floodway
 - Area of Undetermined Flood Hazard
 - 0.2% Annual Chance Flood Hazard
 - Future Conditions 1% Annual Chance Flood Hazard
 - Area with Reduced Risk Due to Levee
- PNW-ASNRI Sensitive Areas of Lakes
- PNW-ASNRI Wild and Scenic Rivers
- PNW-ASNRI Outstanding and Exceptional Streams
- PNW-ASNRI Trout Streams
- PNW-ASNRI Wild Rice Streams
- PNW-ASNRI Outstanding and Exceptional Lakes
- PNW-ASNRI Special Area Management Plan Streams
- PNW-ASNRI Special Wetlands Inventory Study Streams
- PNW-ASNRI Coastal Wisconsin Wetlands Streams
- PNW-ASNRI Special Area Management Plan Areas

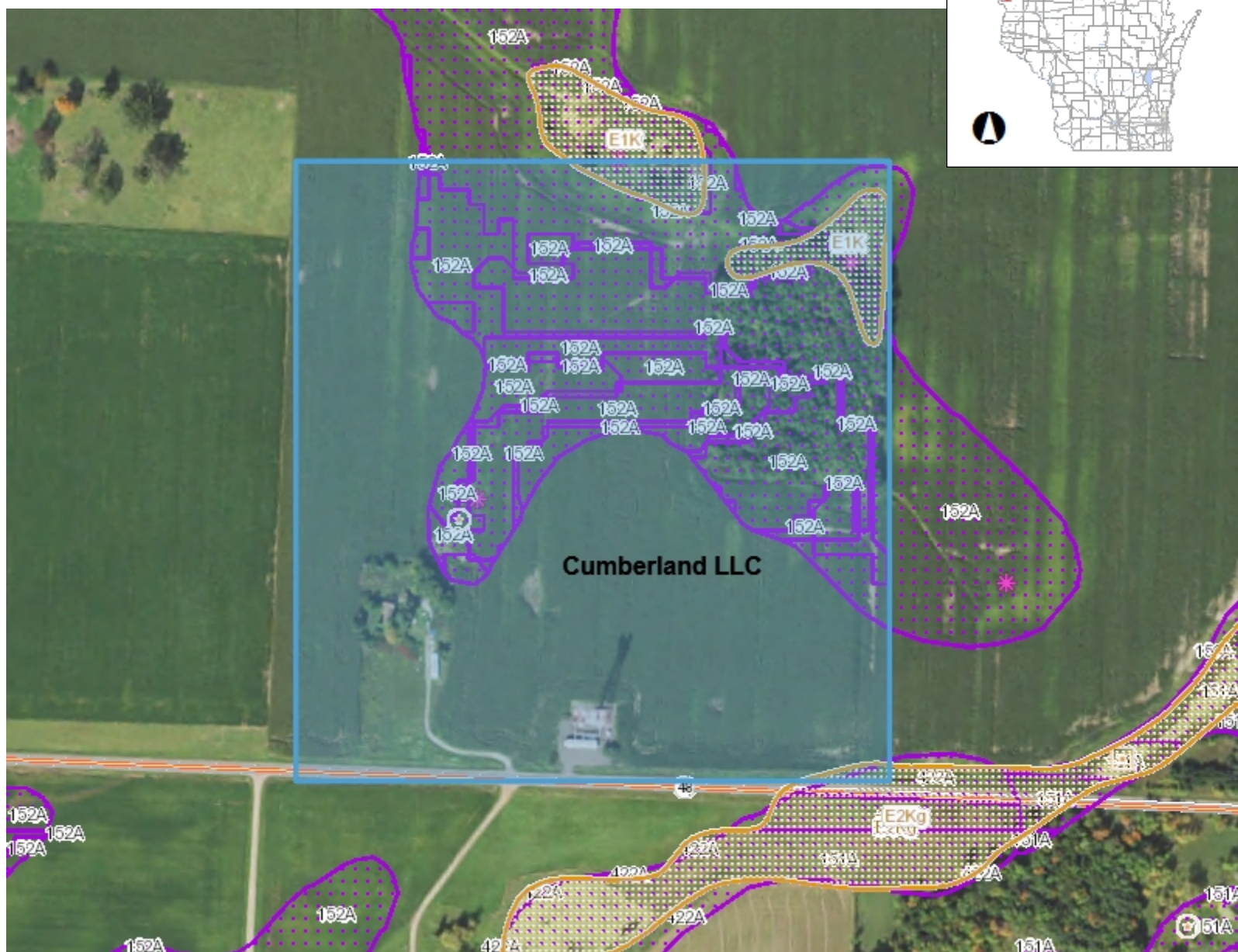
Notes

0.3 0 0.13 0.3 Miles

NAD_1983_HARN_Wisconsin_TM

1: 7,920

DISCLAIMER: The information shown on these maps has been obtained from various sources, and are of varying age, reliability and resolution. These maps are not intended to be used for navigation, nor are these maps an authoritative source of information about legal land ownership or public access. No warranty, expressed or implied, is made regarding accuracy, applicability for a particular use, completeness, or legality of the information depicted on this map. For more information, see the DNR Legal Notices web page: <http://dnr.wi.gov/legal/>






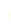
















0.1 0 0.06 0.1 Miles

NAD_1983_HARN_Wisconsin_TM

1: 3,960

DISCLAIMER: The information shown on these maps has been obtained from various sources, and are of varying age, reliability and resolution. These maps are not intended to be used for navigation, nor are these maps an authoritative source of information about legal land ownership or public access. No warranty, expressed or implied, is made regarding accuracy, applicability for a particular use, completeness, or legality of the information depicted on this map. For more information, see the DNR Legal Notices web page: <http://dnr.wi.gov/legal/>

Legend

-  Wetland Identifications and Confirmations
 - Wetland Class Points
 -  Dammed pond
 -  Excavated pond
 -  Filled excavated pond
 -  Filled/draind wetland
 -  Wetland too small to delineate
 - Filled Points
 - Wetland Class Areas
 -  Wetland
 -  Upland
 - Filled Areas
 - Wetland Class Points
 -  Dammed pond
 -  Excavated pond
 -  Filled excavated pond
 -  Filled/draind wetland
 -  Wetland too small to delineate
 - Filled Points
 - Wetland Class Areas
 -  Wetland
 -  Upland
 - Filled Areas
 - NRCS Wetspots
 - Maximum Extent Wetland Indicators
 - Intermittent Streams
 -  24K Hydrography Streams and Rivers
 -  24K Hydrography Lakes and Open Water
 -  Municipality
 -  State Boundaries
 -  County Boundaries

Notes