

**Tour of Fox River  
Village of Waterford  
Village Hall  
123 N. River Street  
Waterford, WI 53185**

**Tuesday, November 10, 2015 – 1:00 p.m.**

***\*\*Please bring waders for walking in the river\*\****

1. Presentation on water levels and concerns - 10/25/15.
2. Update on planning meeting for Fox River National Water Trail application – 11/9/15.
3. Tour and walk in the river at the following locations:
  - 201 S. River Street
  - Whitford Park
  - Phase II Waterford Landing Subdivision
  - Rochester dam
  - Village of Waterford
4. Review of next steps and future communication.

- ① Presentation by Village/Fox River Commission on Effects of drawdown.
- Village taking monthly photos during drawdown to document process.
  - sanitary sewer crossing S of Village - decades old, pipe is exposing surface \$1.2 mill fix.
  - water levels & freeze to pipe - concern to Village
  - Russ requested copy of presentation. - EJ will receive as well.
- ② Water Trail- App made for federal assistance. it accepted to Trail #19 in country.
- Village brought up erosion concerns & asked questions to the Resource Managers.
  - help timing
  - fish

over  
→

Attendees

Tom Bounhou

MS, EJ, CH, RR, MJ, NZ, CH (DNR)

Barb Messick

Jim Pindel

Rebecca Ewald

Jim Schneider

Don Houston

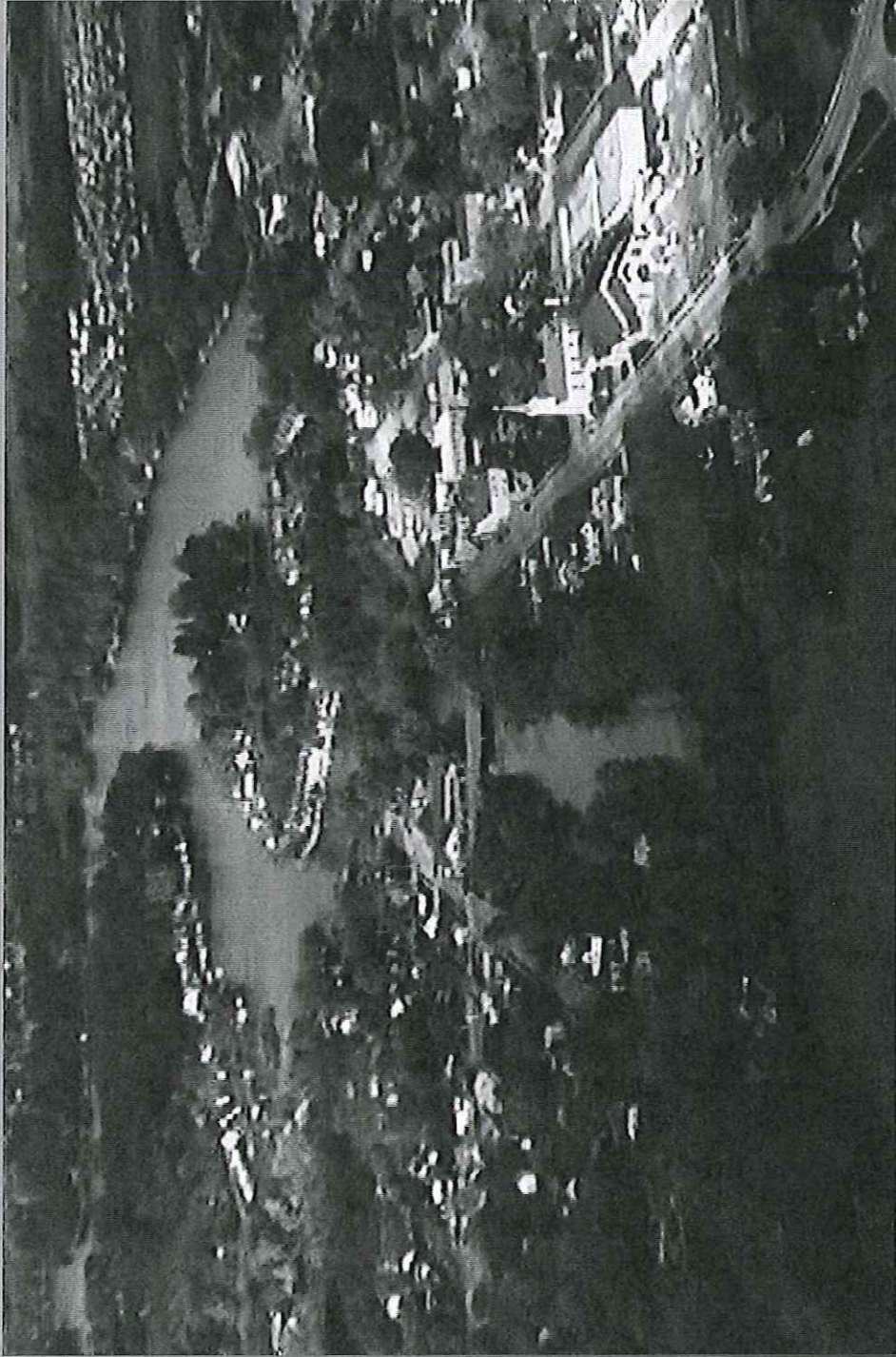


# THE FOX RIVER

Effects of Current Drawdown



# Waterford's Fox River





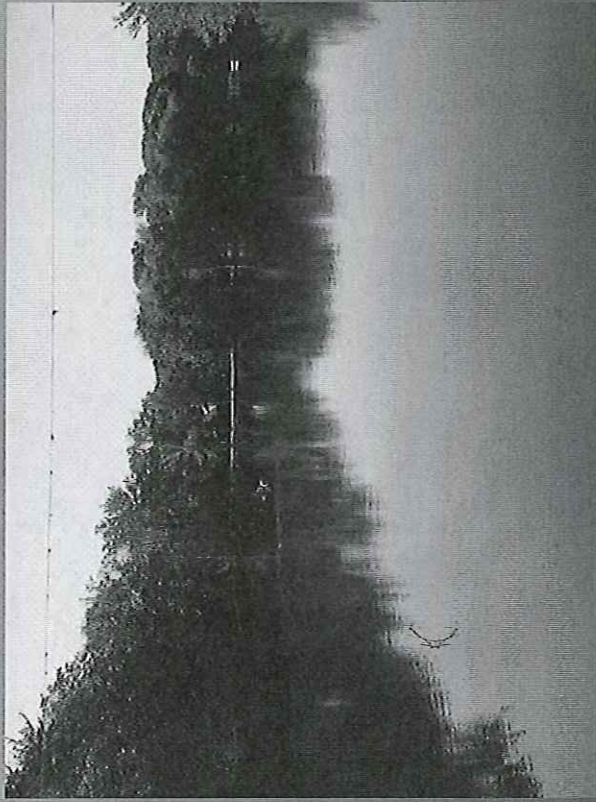
May 2014



# Whitford Park

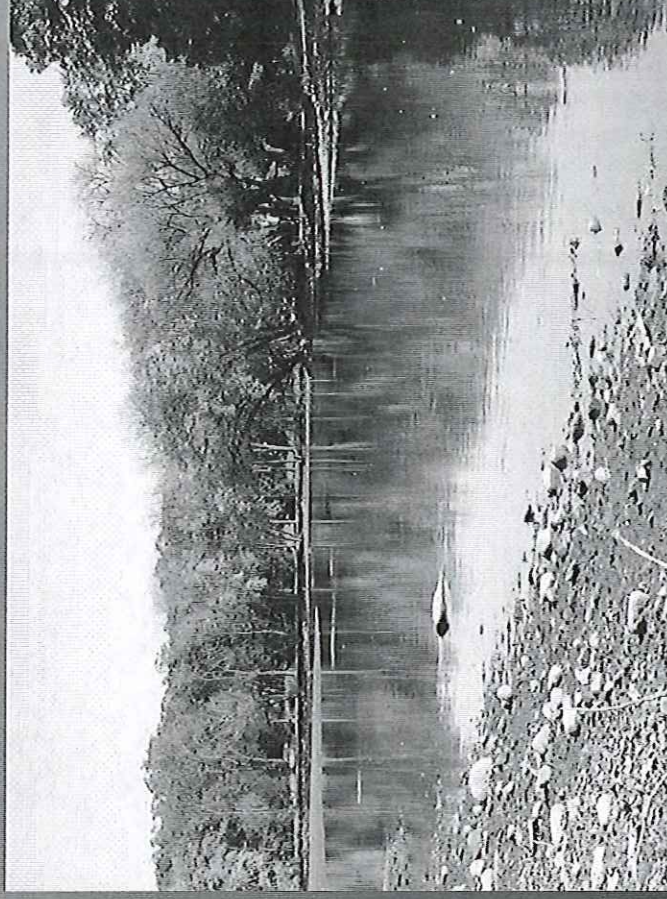


May 2014



Looking South from  
Whitford Park

October 25, 2015



Looking North toward  
Whitford Park



Incident Hydrologic Prediction Service

## Organization

100% Dependence

See New features, functions, and enhancements to AIPS pages as of 3/1/2015. Click here for details.

Weather Forecast Office Milwaukee-Sullivan, WI

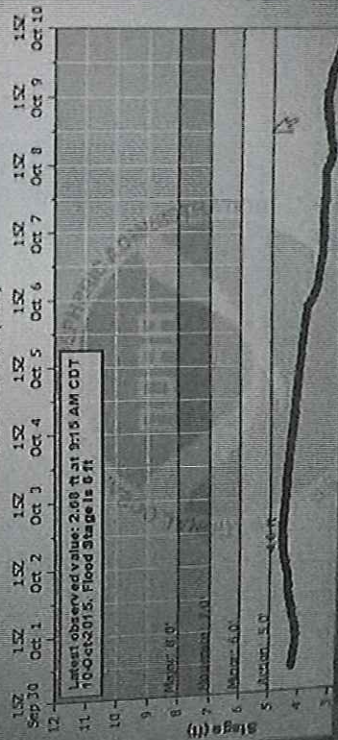
North Central Power Forecast Consultant

**River at a Glance**

Auto Refresh: OFF

FOX RIVER AT ROCHESTER

Universal Time (UTC)

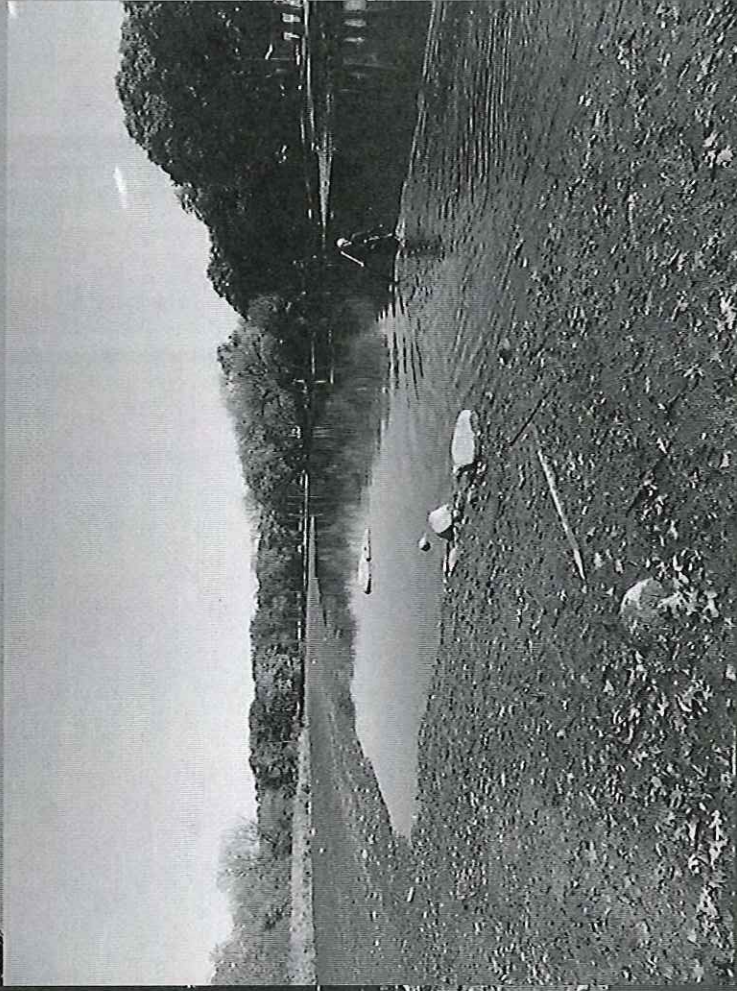
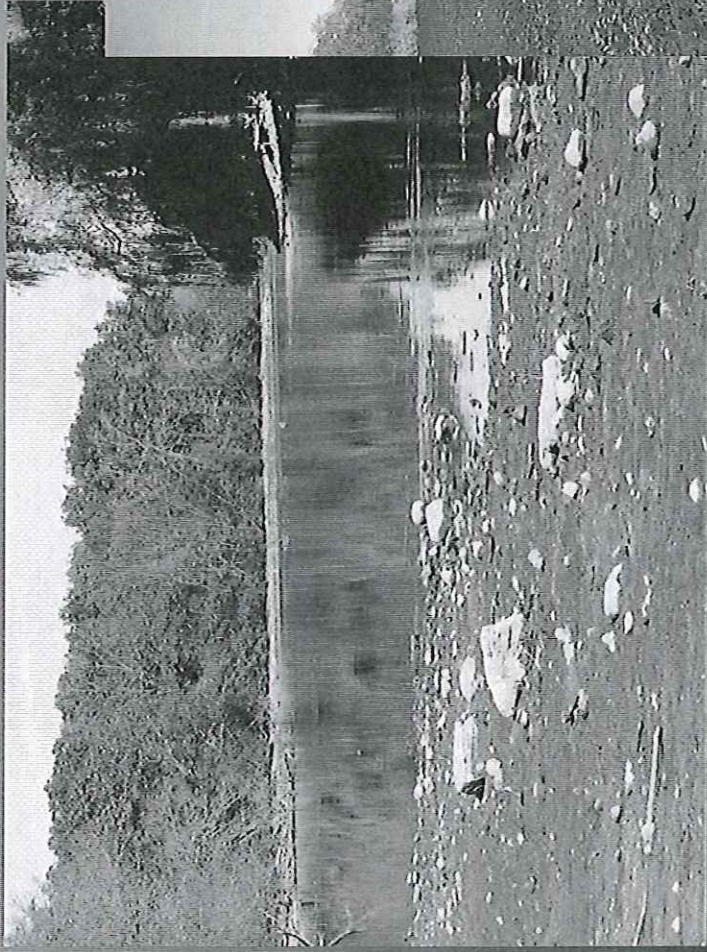


October 25, 2015





October 25, 2015

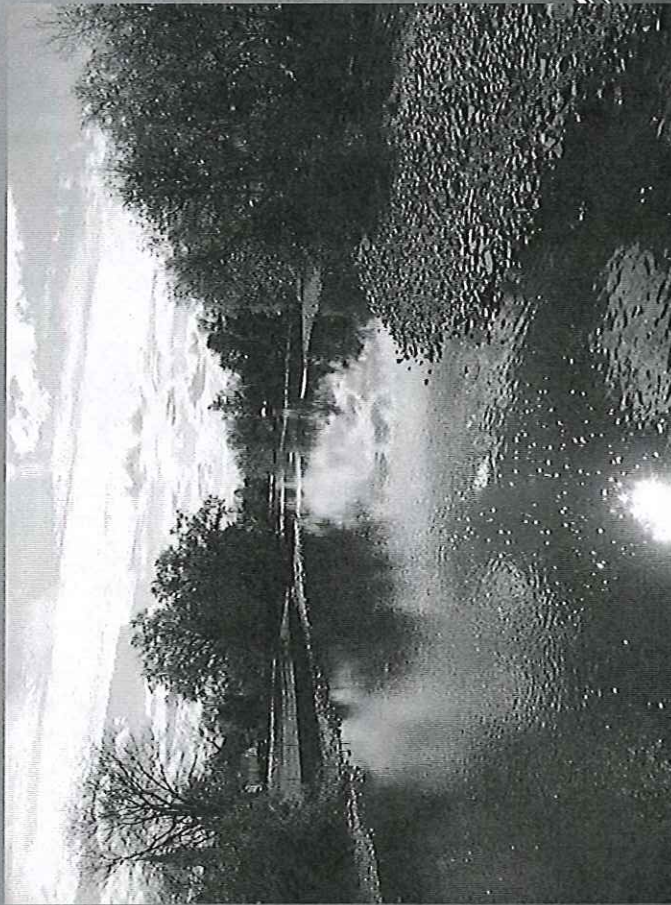




October 25, 2015









# Drawdown and Stability of Sanitary Pipe



- ▶ History of basement back-ups
- ▶ Pipe in poor condition
- ▶ Requires constant monitoring and maintenance
- ▶ Top of pipe exposed on river bottom
- ▶ Replacement would require lowering approximately 3 feet to get proper cover
- ▶ Additionally, would require lowering sewer pipe along three adjacent streets
- ▶ Preliminary opinion of probable cost is \$900,000

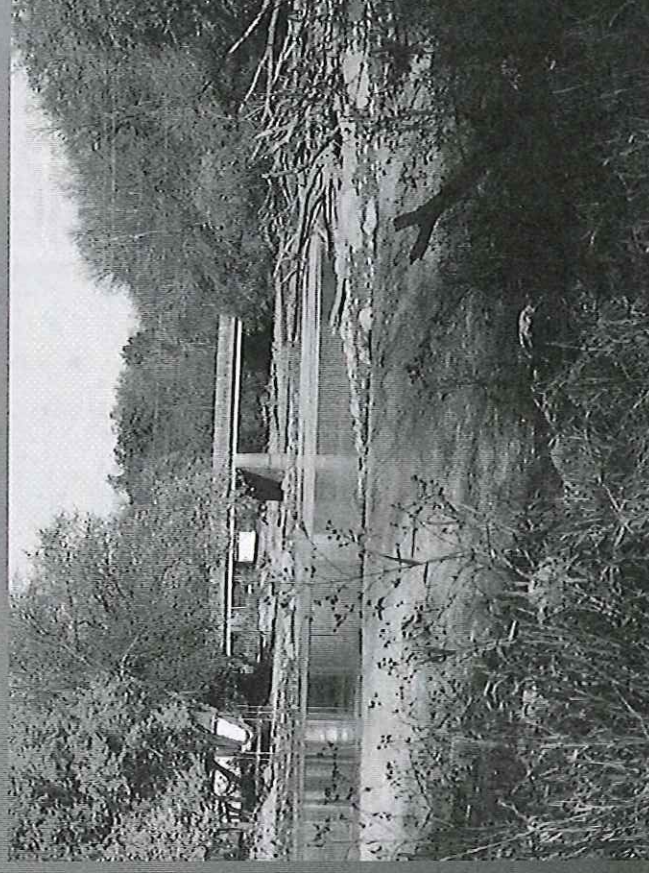
Freeze/Thaw Of Uncovered Pipe  
Cause for Concern



# Looking north to Rochester Dam



July 2015



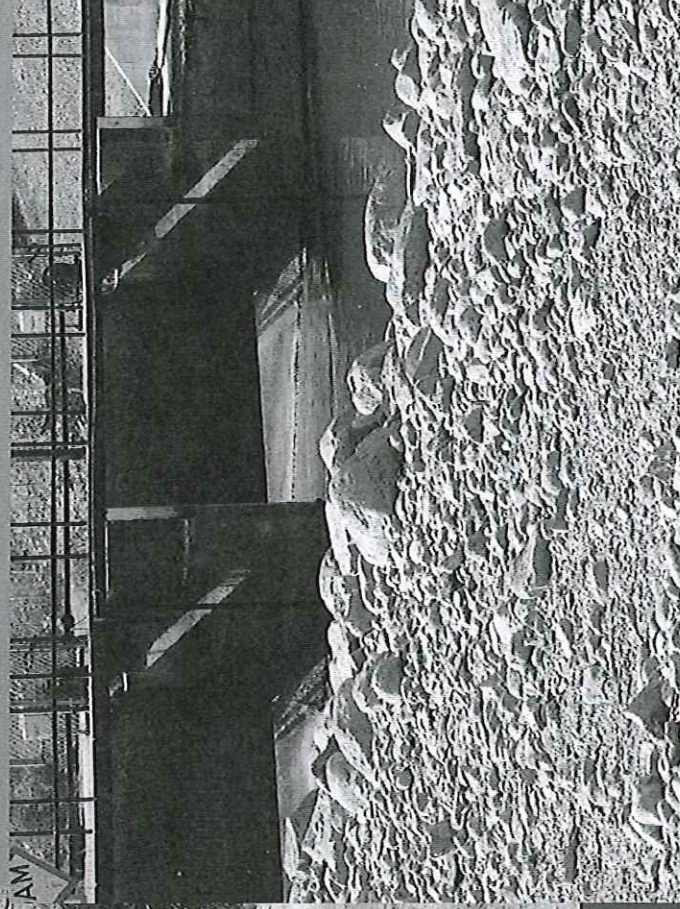
October 25, 2015



# Case Eagle Park canoe/kayak launch



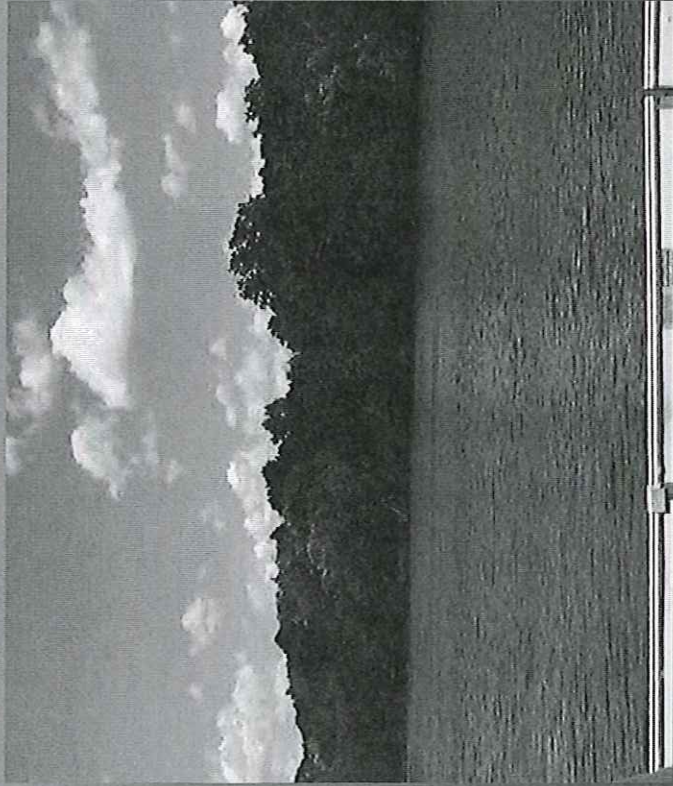
October 25, 2015



Rochester Dam



July 2015



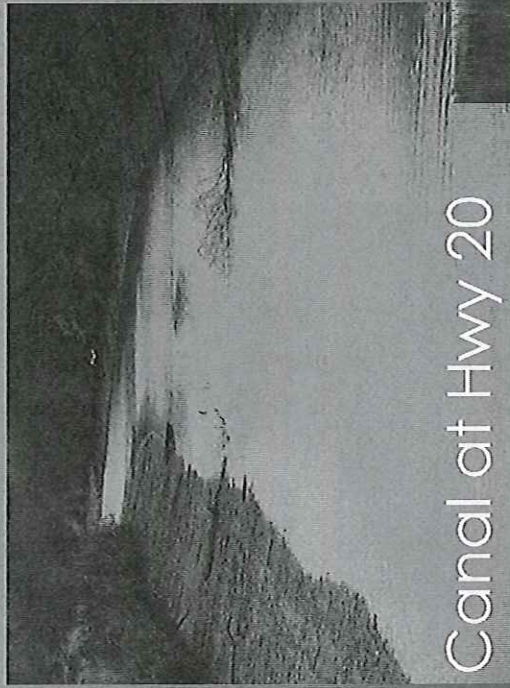
October 25, 2015



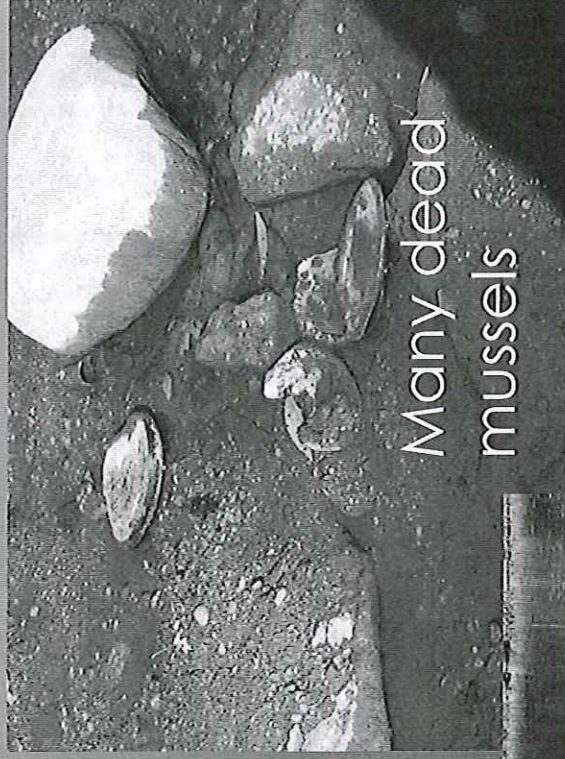
Looking north toward Waterford Landing



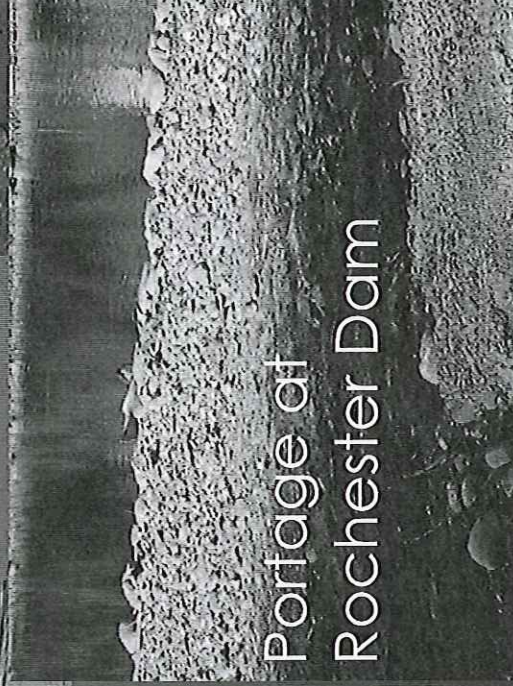
October 25, 2015



Canal at Hwy 20



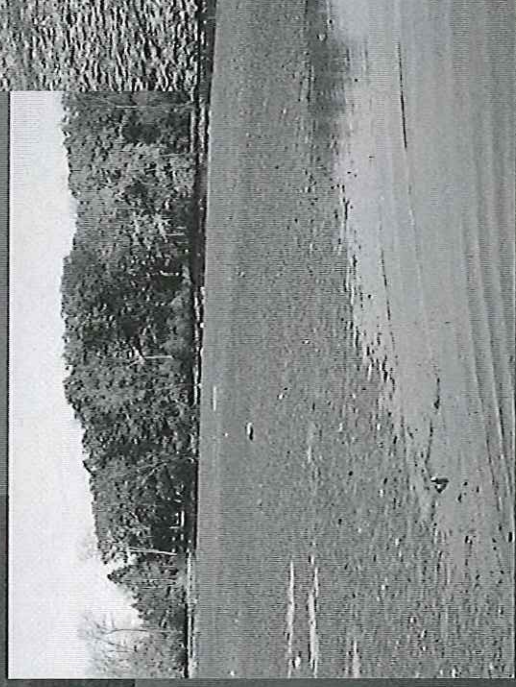
Many dead  
mussels



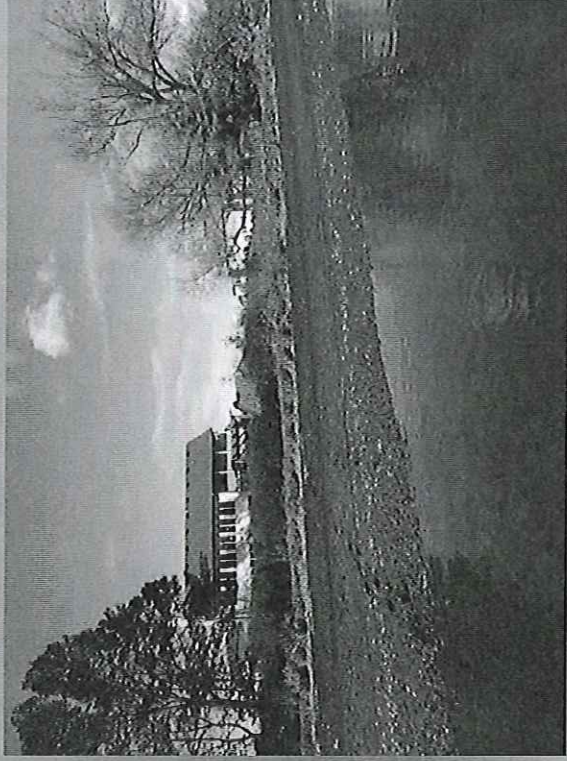
Portage at  
Rochester Dam



October 2015



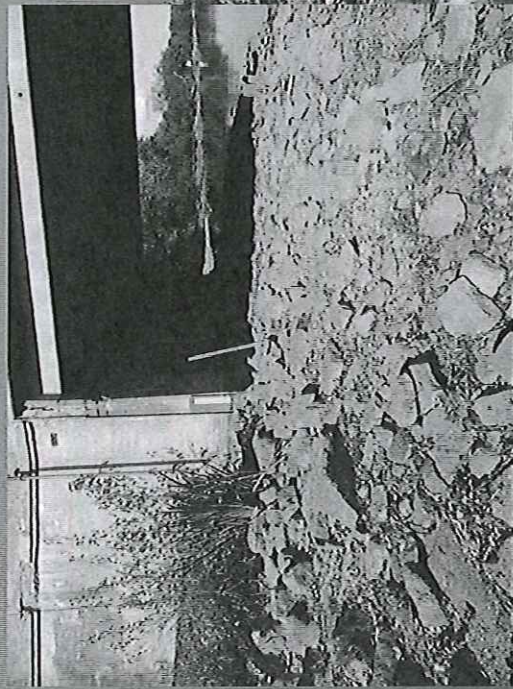




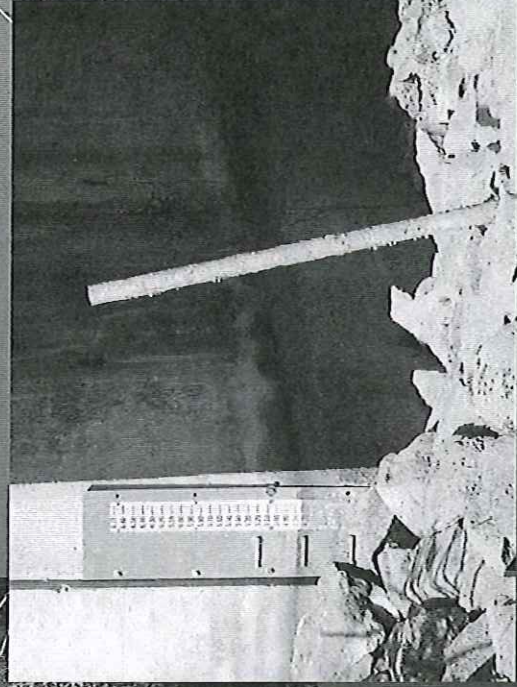
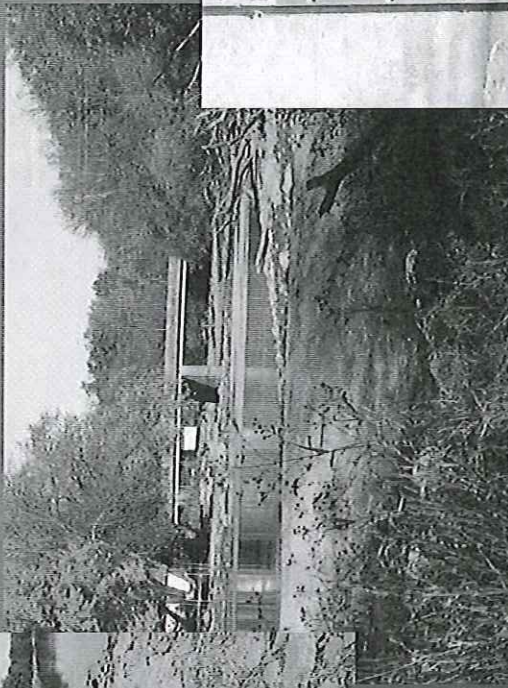
October 2015



October 2015



Rochester Bridge





## Johnson, Elaine M - DNR

---

**From:** Rebecca Ewald <rewald@waterfordwi.org>  
**Sent:** Tuesday, November 10, 2015 8:26 PM  
**To:** Rasmussen, Russell A - DNR  
**Cc:** Johnson, Elaine M - DNR; Scott, Michelle M - DNR; Zoch, Nathan D - DNR; Helker, Craig D - DNR; Webster, Craig M - DNR; Johnson, B Martinus - DNR; Jim Schneider; Jeff Dolezal; Karen Koeller; Tom Roanhouse; Barb Messick  
**Subject:** Re: Tour of Fox River

Thank you again for taking the time out of your busy schedules to tour the Fox River today. It was a pleasure to tour with each of you. For your notes following the meeting, we visited the sites below in the following order:

- ① 201 S. River Street
- ② Whitford Park
- ③ River Road Bridge - Drainage Canal
- ④ Case Eagle Park - Rochester Dam
- ⑤ Waterford Landing Subdivision

} see reverse for water depths  
taken by DNR on 10/10/15.

Should you have any additional questions, please feel free to contact me at anytime.

Sincerely,  
Rebecca

On Mon, Nov 9, 2015 at 11:38 AM, Rebecca Ewald <rewald@waterfordwi.org> wrote:  
Good morning Russ:

Thank you again for taking the time out of your busy schedules to review Fox River conditions with us tomorrow. Attached is an agenda for our meeting at 1:00 p.m. at Village Hall. Please have your staff bring their waders and/or high boots for our in water tour in the Fox River. Those without waders will need to stay on the shore, but from experience two weeks ago, being in the river is the only way to really appreciate the current conditions.

If you have any additional items you would like to add to this agenda, please let me know.

Looking forward to seeing you soon.  
Rebecca

--

Rebecca Ewald | Administrator  
Village of Waterford  
123 North River Street, Waterford, WI 53185  
262.534.3980 | Fax 262.534.5373  
[rewald@waterfordwi.org](mailto:rewald@waterfordwi.org)  
[www.waterfordwi.org](http://www.waterfordwi.org)

over  
→



--  
Rebecca Ewald | Administrator  
Village of Waterford  
123 North River Street, Waterford, WI 53185  
262.534.3980 | Fax 262.534.5373  
[rewald@waterfordwi.org](mailto:rewald@waterfordwi.org)  
[www.waterfordwi.org](http://www.waterfordwi.org)

NOTICE: This message may contain confidential or legally privileged information and attachments. If you think this message was sent to you by mistake, please delete all copies and advise the sender.

- ① 201 S. River St. = 1.6' east side of river  
1.6' center  
1' west side / bank edge
- ② Whitford Park = 1.3' east side  
1.6' center  
1.2' west side
- ③ River Road Bridge - depths in Wind Lake canal  
towards mouth by Fox = 2.5' - 3'  
(3.5' deepest spot)  $\frac{1}{4}$  2' as you  
enter the Fox River
- ④ Cale Eagle park - 1.9' - 2.1' in River
- ⑤ Waterford Landing subdivision = 1.5' center  
1.5' towards  
W bank