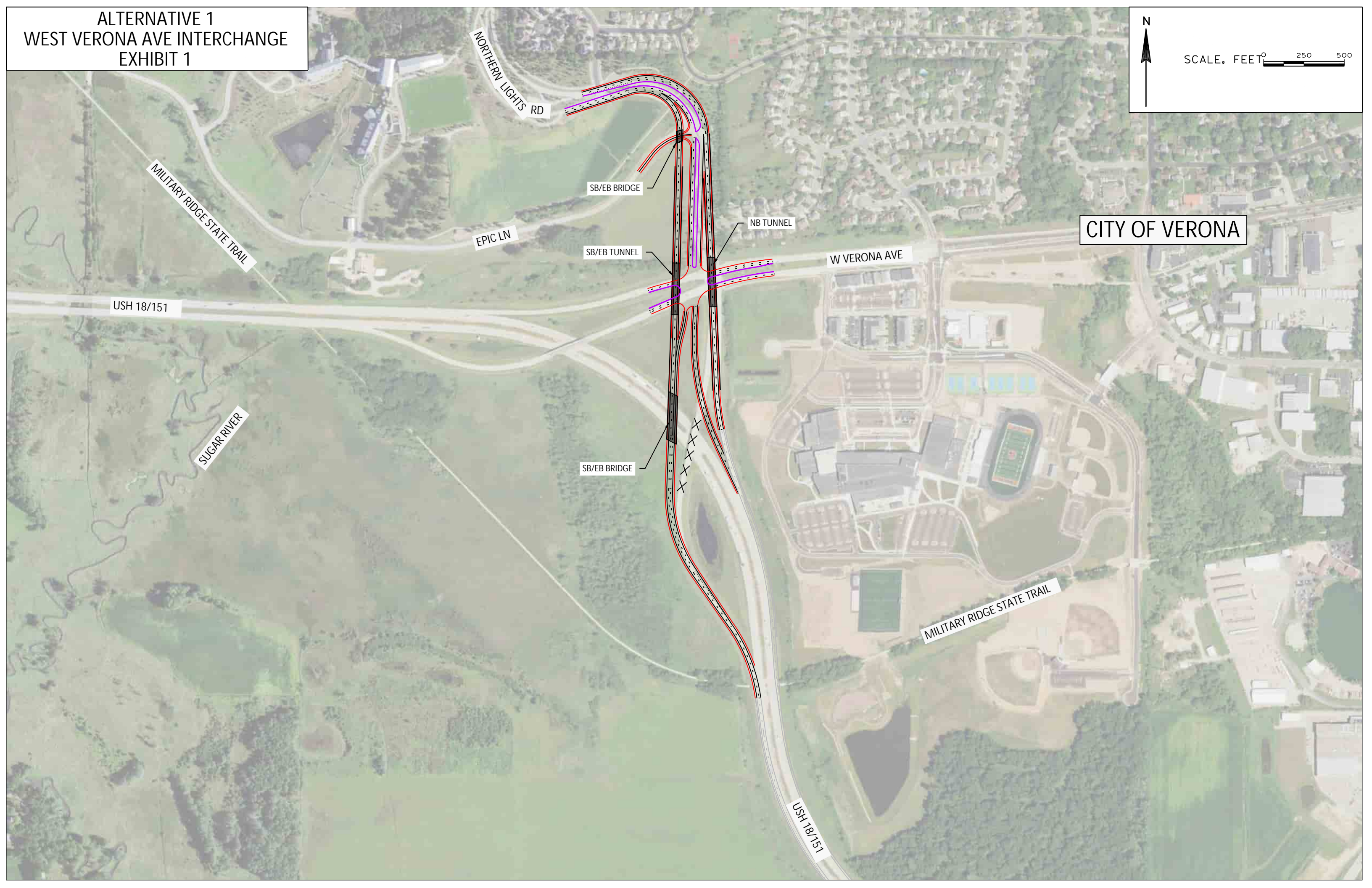


ALTERNATIVE 1
WEST VERONA AVE INTERCHANGE
EXHIBIT 1

N

SCALE, FEET 0 250 500



CITY OF VERONA

NORTHERN LIGHTS RD

MILITARY RIDGE STATE TRAIL

USH 18/151

SUGAR RIVER

EPIC LN

SB/EB BRIDGE

NB TUNNEL

W VERONA AVE

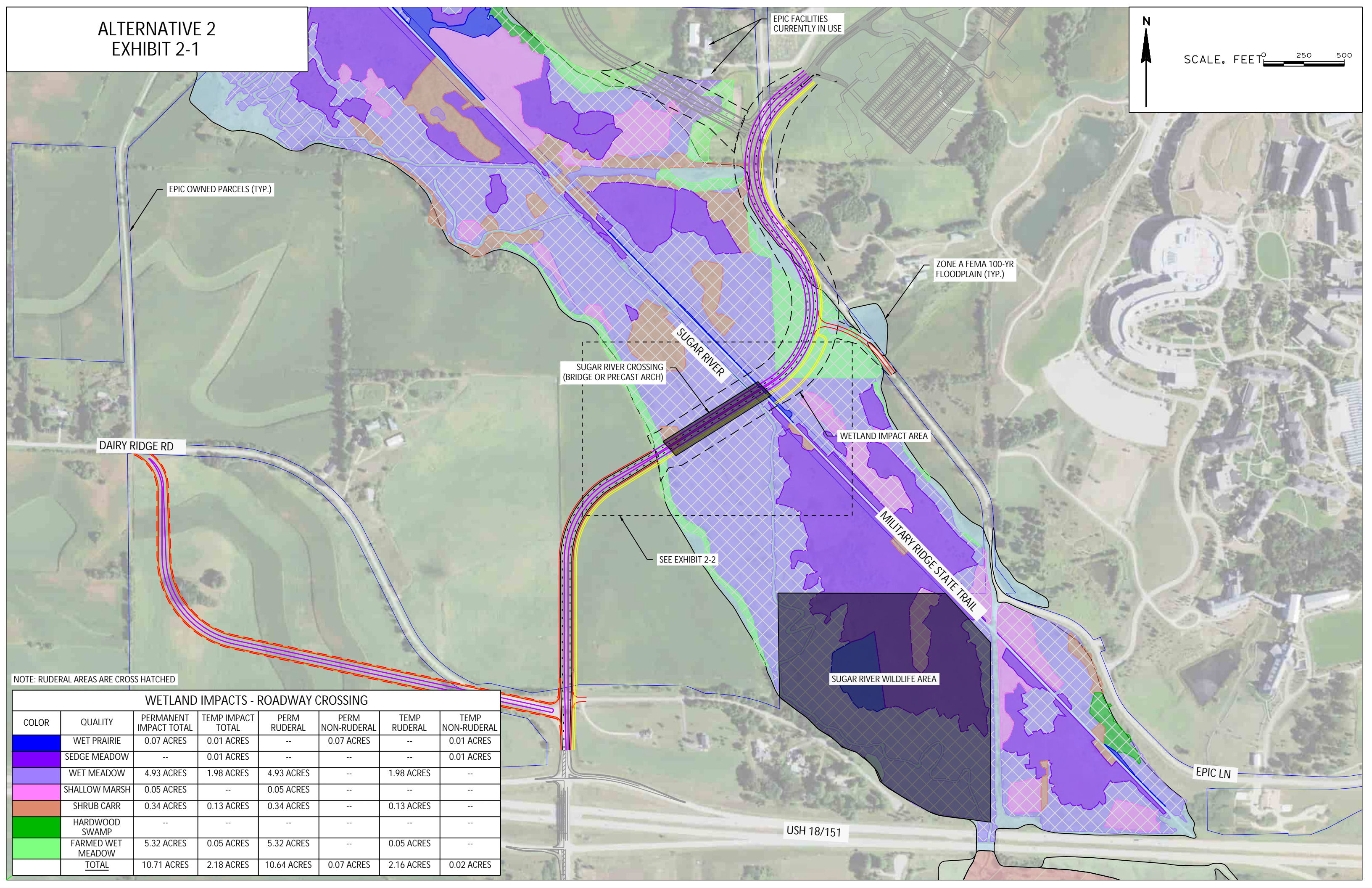
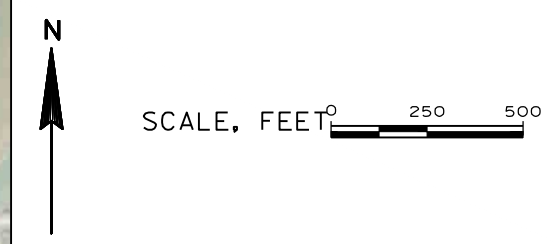
SB/EB TUNNEL

SB/EB BRIDGE

MILITARY RIDGE STATE TRAIL

USH 18/151

ALTERNATIVE 2
EXHIBIT 2-1

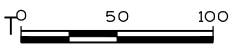


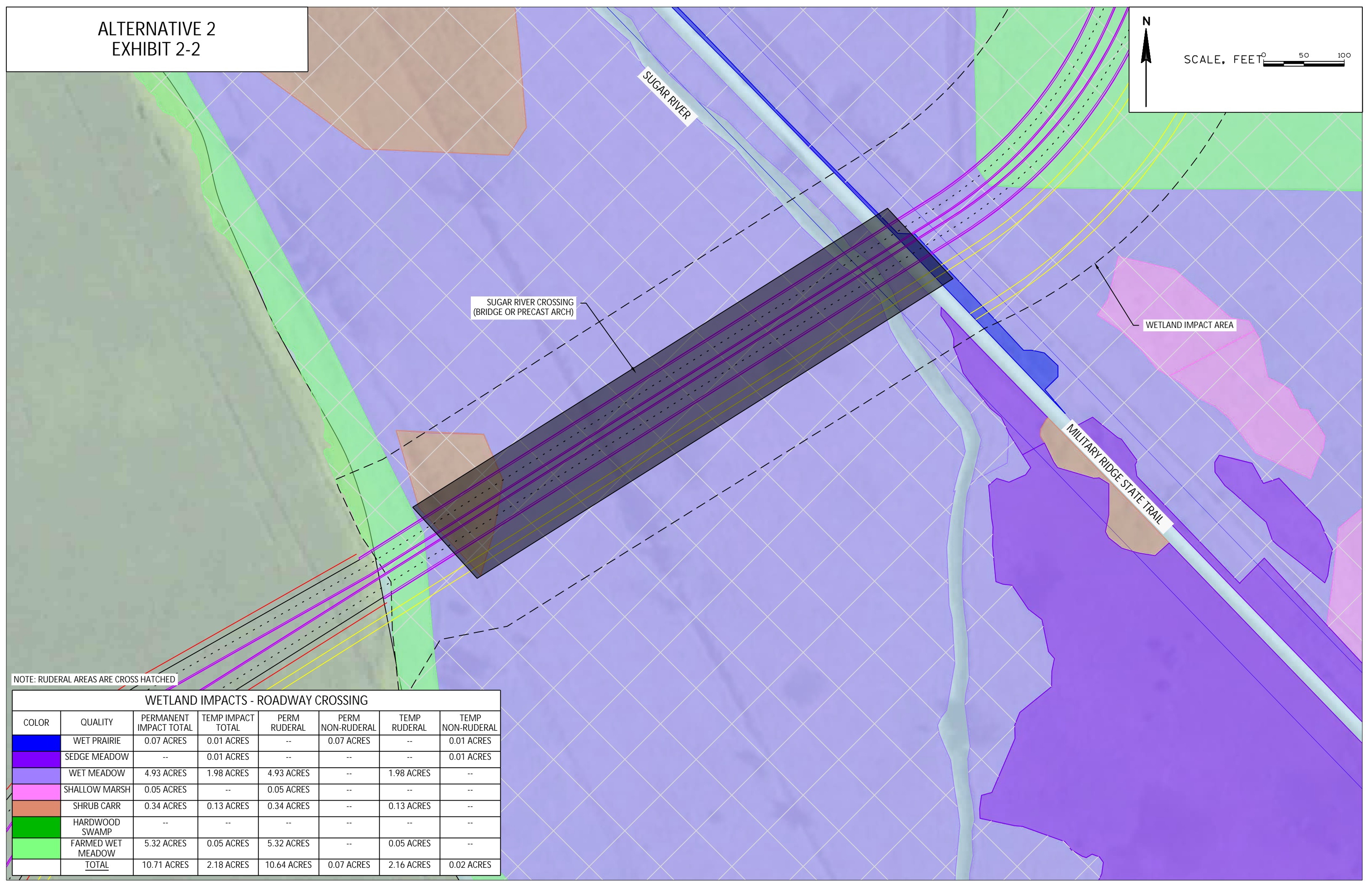
NOTE: RUDERAL AREAS ARE CROSS HATCHED

WETLAND IMPACTS - ROADWAY CROSSING							
COLOR	QUALITY	PERMANENT IMPACT TOTAL	TEMP IMPACT TOTAL	PERM RUDERAL	PERM NON-RUDERAL	TEMP RUDERAL	TEMP NON-RUDERAL
Blue	WET PRAIRIE	0.07 ACRES	0.01 ACRES	--	0.07 ACRES	--	0.01 ACRES
Purple	SEDGE MEADOW	--	0.01 ACRES	--	--	--	0.01 ACRES
Light Purple	WET MEADOW	4.93 ACRES	1.98 ACRES	4.93 ACRES	--	1.98 ACRES	--
Pink	SHALLOW MARSH	0.05 ACRES	--	0.05 ACRES	--	--	--
Brown	SHRUB CARR	0.34 ACRES	0.13 ACRES	0.34 ACRES	--	0.13 ACRES	--
Green	HARDWOOD SWAMP	--	--	--	--	--	--
Light Green	FARMED WET MEADOW	5.32 ACRES	0.05 ACRES	5.32 ACRES	--	0.05 ACRES	--
	TOTAL	10.71 ACRES	2.18 ACRES	10.64 ACRES	0.07 ACRES	2.16 ACRES	0.02 ACRES

ALTERNATIVE 2
EXHIBIT 2-2

N

SCALE, FEET 



SUGAR RIVER CROSSING
(BRIDGE OR PRECAST ARCH)








WETLAND IMPACT AREA

MILITARY RIDGE STATE TRAIL

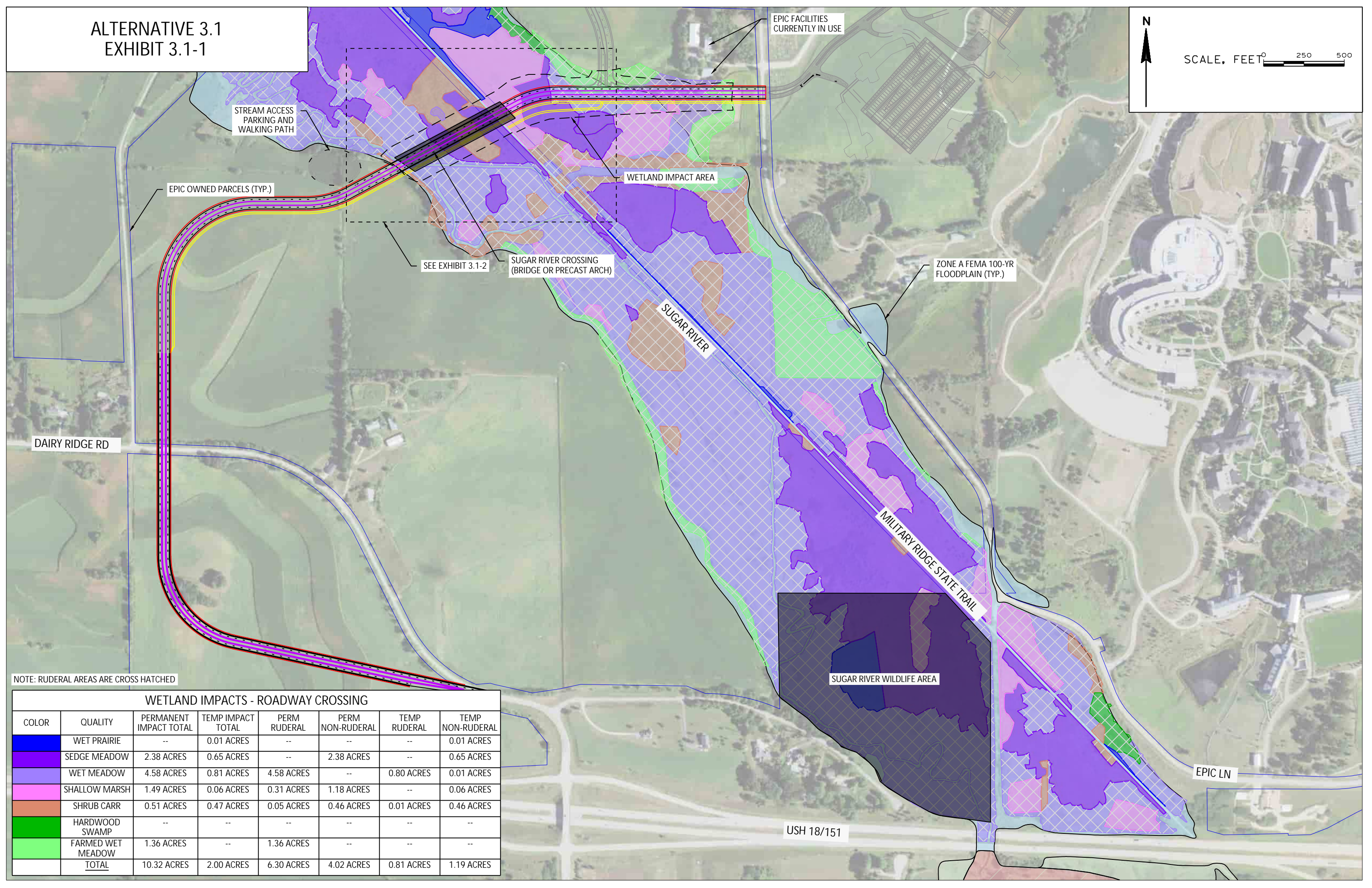
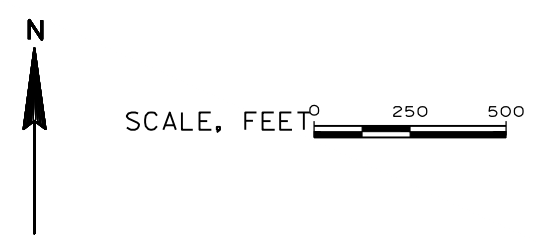
SUGAR RIVER

NOTE: RUDERAL AREAS ARE CROSS HATCHED

WETLAND IMPACTS - ROADWAY CROSSING

COLOR	QUALITY	PERMANENT IMPACT TOTAL	TEMP IMPACT TOTAL	PERM RUDERAL	PERM NON-RUDERAL	TEMP RUDERAL	TEMP NON-RUDERAL
	WET PRAIRIE	0.07 ACRES	0.01 ACRES	--	0.07 ACRES	--	0.01 ACRES
	SEDGE MEADOW	--	0.01 ACRES	--	--	--	0.01 ACRES
	WET MEADOW	4.93 ACRES	1.98 ACRES	4.93 ACRES	--	1.98 ACRES	--
	SHALLOW MARSH	0.05 ACRES	--	0.05 ACRES	--	--	--
	SHRUB CARR	0.34 ACRES	0.13 ACRES	0.34 ACRES	--	0.13 ACRES	--
	HARDWOOD SWAMP	--	--	--	--	--	--
	FARMED WET MEADOW	5.32 ACRES	0.05 ACRES	5.32 ACRES	--	0.05 ACRES	--
	TOTAL	10.71 ACRES	2.18 ACRES	10.64 ACRES	0.07 ACRES	2.16 ACRES	0.02 ACRES

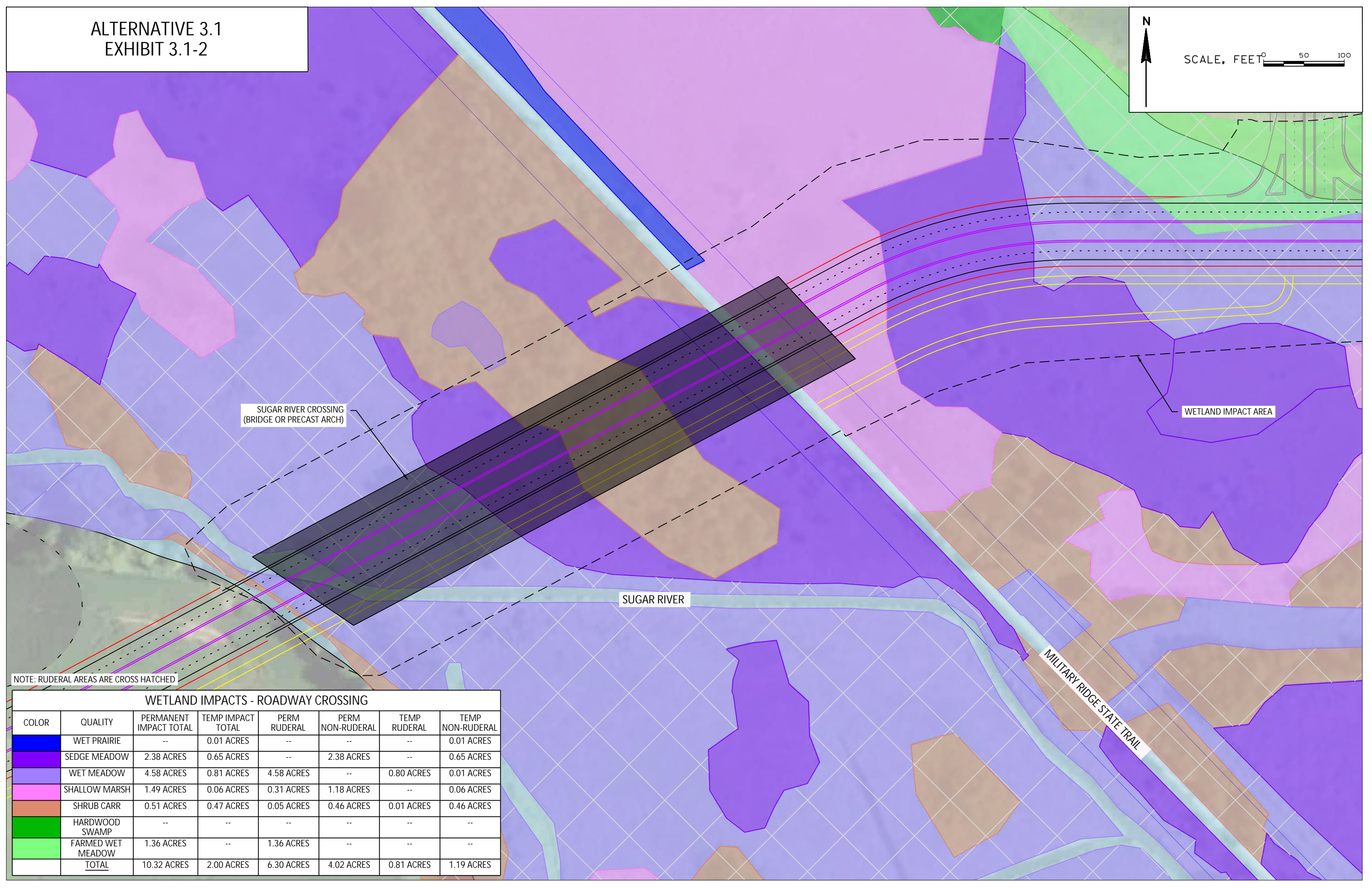
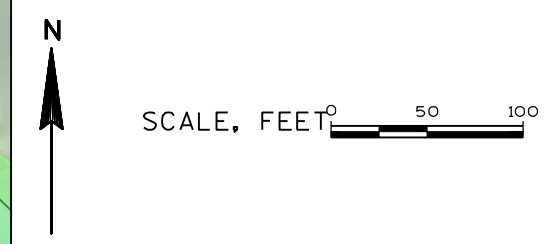
ALTERNATIVE 3.1
EXHIBIT 3.1-1



NOTE: RUDERAL AREAS ARE CROSS HATCHED

WETLAND IMPACTS - ROADWAY CROSSING							
COLOR	QUALITY	PERMANENT IMPACT TOTAL	TEMP IMPACT TOTAL	PERM RUDERAL	PERM NON-RUDERAL	TEMP RUDERAL	TEMP NON-RUDERAL
Blue	WET PRAIRIE	--	0.01 ACRES	--	--	--	0.01 ACRES
Purple	SEDGE MEADOW	2.38 ACRES	0.65 ACRES	--	2.38 ACRES	--	0.65 ACRES
Light Purple	WET MEADOW	4.58 ACRES	0.81 ACRES	4.58 ACRES	--	0.80 ACRES	0.01 ACRES
Pink	SHALLOW MARSH	1.49 ACRES	0.06 ACRES	0.31 ACRES	1.18 ACRES	--	0.06 ACRES
Orange	SHRUB CARR	0.51 ACRES	0.47 ACRES	0.05 ACRES	0.46 ACRES	0.01 ACRES	0.46 ACRES
Green	HARDWOOD SWAMP	--	--	--	--	--	--
Light Green	FARMED WET MEADOW	1.36 ACRES	--	1.36 ACRES	--	--	--
	TOTAL	10.32 ACRES	2.00 ACRES	6.30 ACRES	4.02 ACRES	0.81 ACRES	1.19 ACRES

ALTERNATIVE 3.1
EXHIBIT 3.1-2



SUGAR RIVER CROSSING
(BRIDGE OR PRECAST ARCH)

WETLAND IMPACT AREA

SUGAR RIVER

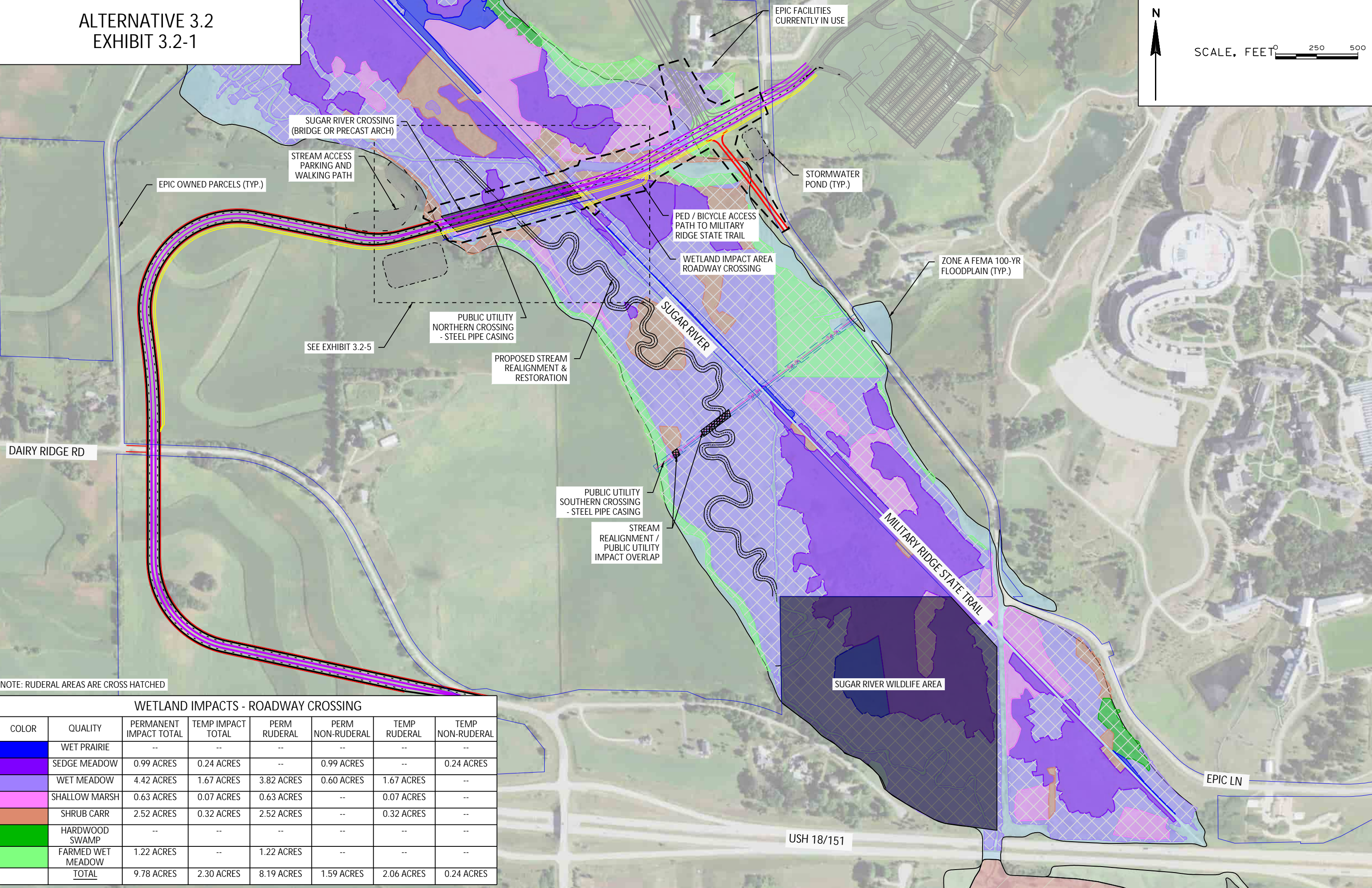
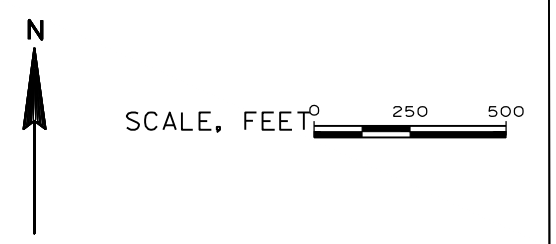
MILITARY RIDGE STATE TRAIL

NOTE: RUDERAL AREAS ARE CROSS HATCHED

WETLAND IMPACTS - ROADWAY CROSSING

COLOR	QUALITY	PERMANENT IMPACT TOTAL	TEMP IMPACT TOTAL	PERM RUDERAL	PERM NON-RUDERAL	TEMP RUDERAL	TEMP NON-RUDERAL
	WET PRAIRIE	--	0.01 ACRES	--	--	--	0.01 ACRES
	SEDGE MEADOW	2.38 ACRES	0.65 ACRES	--	2.38 ACRES	--	0.65 ACRES
	WET MEADOW	4.58 ACRES	0.81 ACRES	4.58 ACRES	--	0.80 ACRES	0.01 ACRES
	SHALLOW MARSH	1.49 ACRES	0.06 ACRES	0.31 ACRES	1.18 ACRES	--	0.06 ACRES
	SHRUB CARR	0.51 ACRES	0.47 ACRES	0.05 ACRES	0.46 ACRES	0.01 ACRES	0.46 ACRES
	HARDWOOD SWAMP	--	--	--	--	--	--
	FARMED WET MEADOW	1.36 ACRES	--	1.36 ACRES	--	--	--
	TOTAL	10.32 ACRES	2.00 ACRES	6.30 ACRES	4.02 ACRES	0.81 ACRES	1.19 ACRES

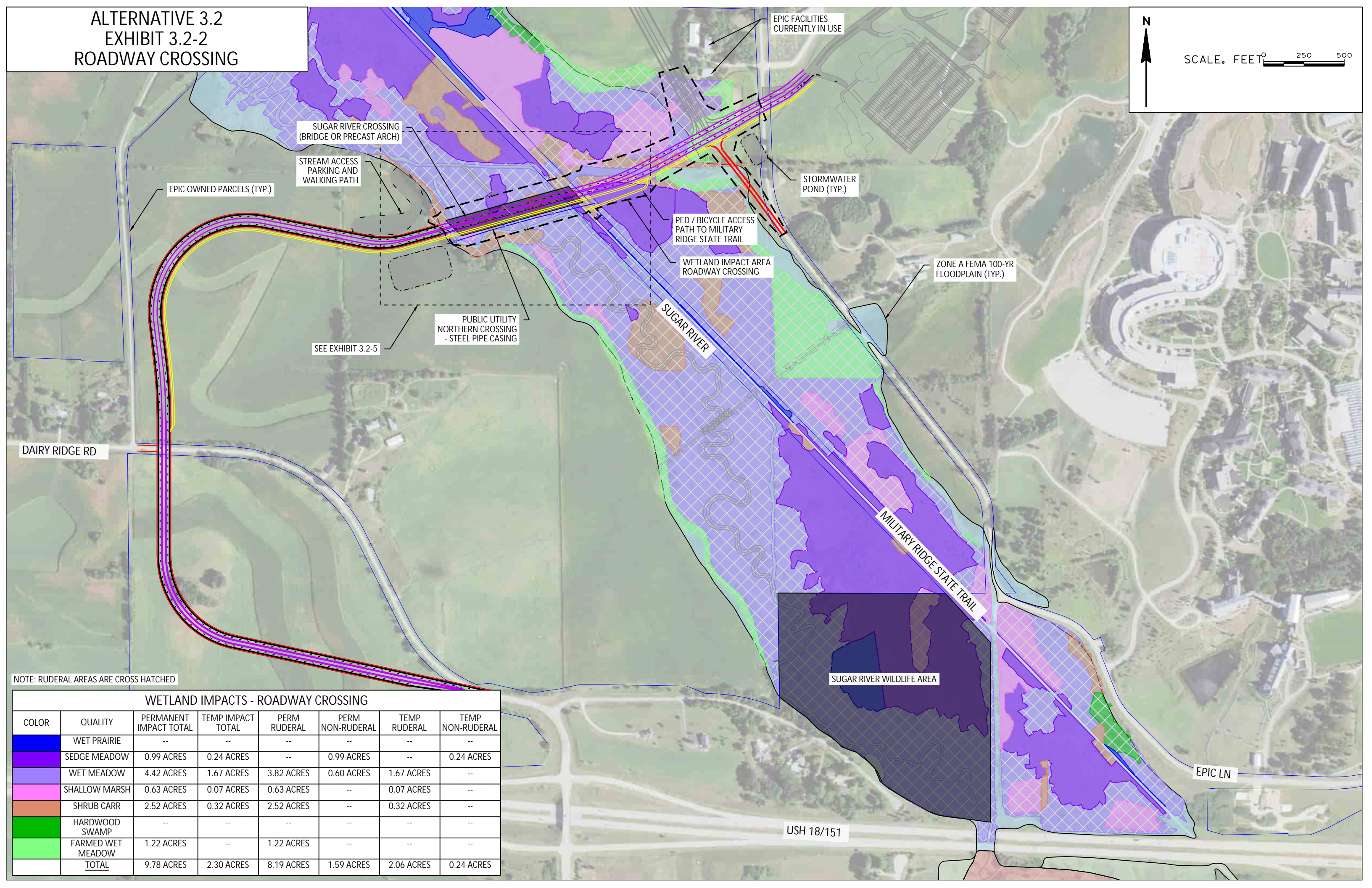
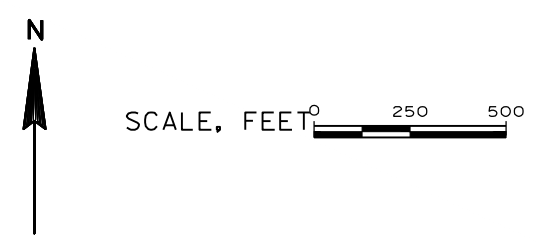
ALTERNATIVE 3.2
EXHIBIT 3.2-1



NOTE: RUDERAL AREAS ARE CROSS HATCHED

WETLAND IMPACTS - ROADWAY CROSSING							
COLOR	QUALITY	PERMANENT IMPACT TOTAL	TEMP IMPACT TOTAL	PERM RUDERAL	PERM NON-RUDERAL	TEMP RUDERAL	TEMP NON-RUDERAL
Blue	WET PRAIRIE	--	--	--	--	--	--
Purple	SEDGE MEADOW	0.99 ACRES	0.24 ACRES	--	0.99 ACRES	--	0.24 ACRES
Light Purple	WET MEADOW	4.42 ACRES	1.67 ACRES	3.82 ACRES	0.60 ACRES	1.67 ACRES	--
Pink	SHALLOW MARSH	0.63 ACRES	0.07 ACRES	0.63 ACRES	--	0.07 ACRES	--
Orange	SHRUB CARR	2.52 ACRES	0.32 ACRES	2.52 ACRES	--	0.32 ACRES	--
Green	HARDWOOD SWAMP	--	--	--	--	--	--
Light Green	FARMED WET MEADOW	1.22 ACRES	--	1.22 ACRES	--	--	--
	TOTAL	9.78 ACRES	2.30 ACRES	8.19 ACRES	1.59 ACRES	2.06 ACRES	0.24 ACRES

ALTERNATIVE 3.2
EXHIBIT 3.2-2
ROADWAY CROSSING



SUGAR RIVER CROSSING
(BRIDGE OR PRECAST ARCH)

STREAM ACCESS
PARKING AND
WALKING PATH

EPIC OWNED PARCELS (TYP.)

EPIC FACILITIES
CURRENTLY IN USE

STORMWATER
POND (TYP.)

PED / BICYCLE ACCESS
PATH TO MILITARY
RIDGE STATE TRAIL

WETLAND IMPACT AREA
ROADWAY CROSSING

ZONE A FEMA 100-YR
FLOODPLAIN (TYP.)

PUBLIC UTILITY
NORTHERN CROSSING
- STEEL PIPE CASING

SEE EXHIBIT 3.2-5

SUGAR RIVER

DAIRY RIDGE RD

MILITARY RIDGE STATE TRAIL

SUGAR RIVER WILDLIFE AREA

EPIC LN

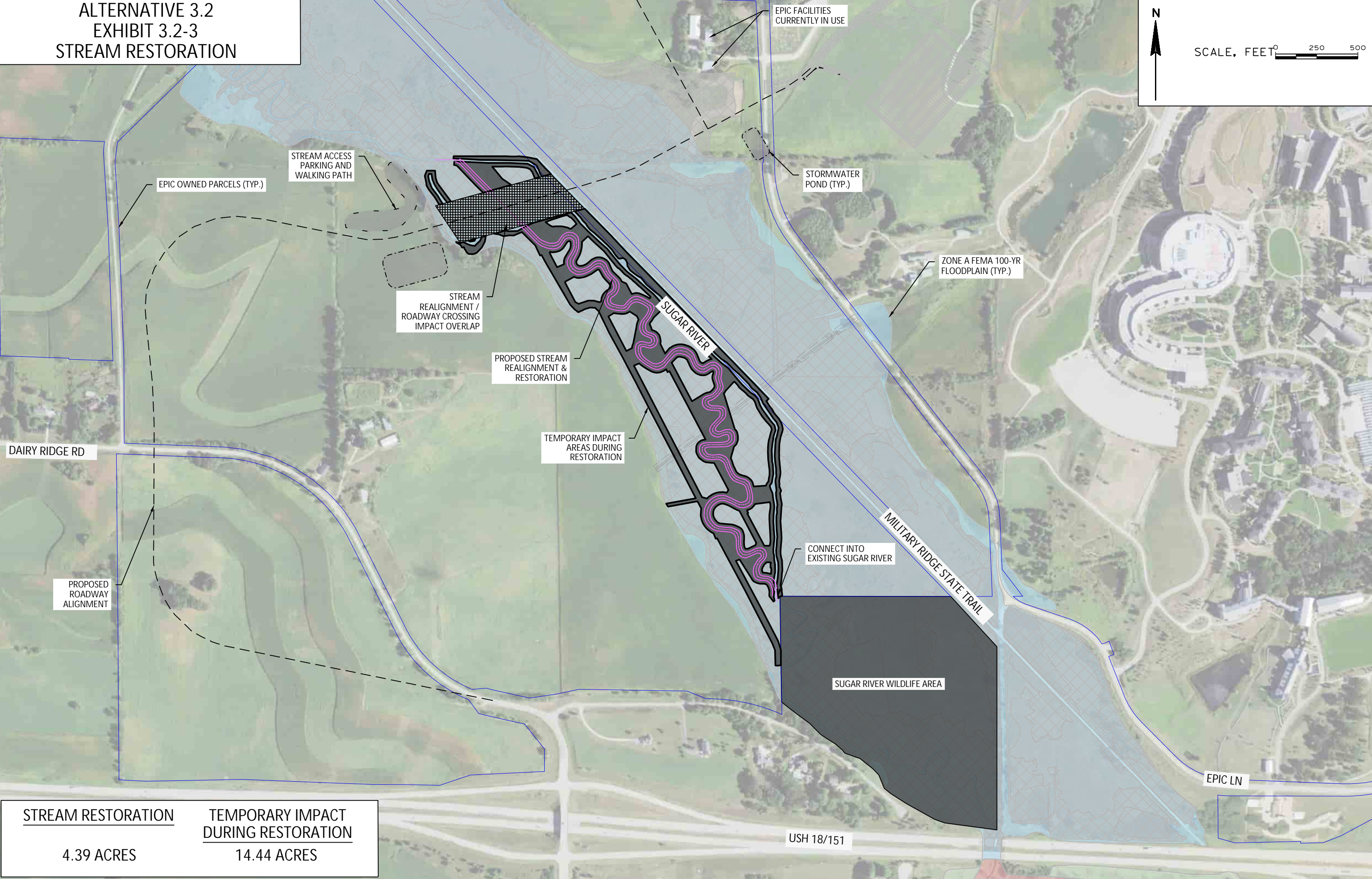
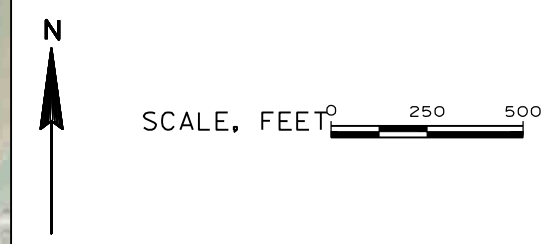
USH 18/151

NOTE: RUDERAL AREAS ARE CROSS HATCHED

WETLAND IMPACTS - ROADWAY CROSSING

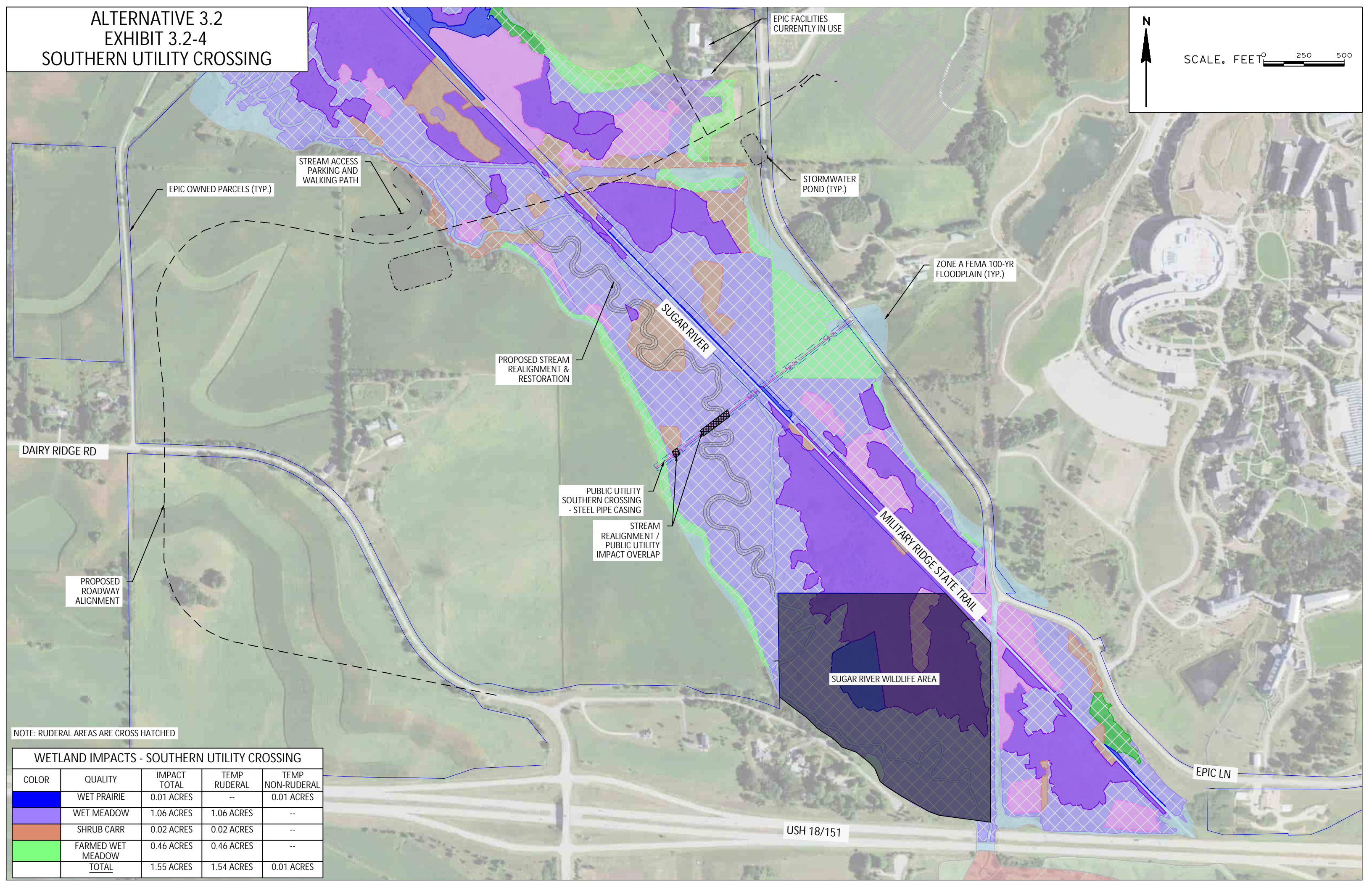
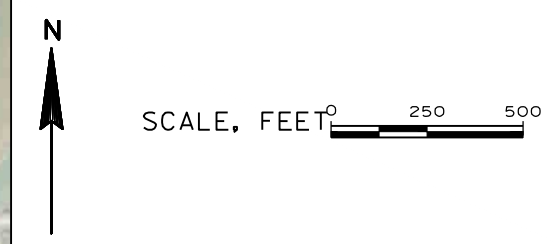
COLOR	QUALITY	PERMANENT IMPACT TOTAL	TEMP IMPACT TOTAL	PERM RUDERAL	PERM NON-RUDERAL	TEMP RUDERAL	TEMP NON-RUDERAL
Blue	WET PRAIRIE	--	--	--	--	--	--
Purple	SEDGE MEADOW	0.99 ACRES	0.24 ACRES	--	0.99 ACRES	--	0.24 ACRES
Light Purple	WET MEADOW	4.42 ACRES	1.67 ACRES	3.82 ACRES	0.60 ACRES	1.67 ACRES	--
Pink	SHALLOW MARSH	0.63 ACRES	0.07 ACRES	0.63 ACRES	--	0.07 ACRES	--
Orange	SHRUB CARR	2.52 ACRES	0.32 ACRES	2.52 ACRES	--	0.32 ACRES	--
Green	HARDWOOD SWAMP	--	--	--	--	--	--
Light Green	FARMED WET MEADOW	1.22 ACRES	--	1.22 ACRES	--	--	--
	TOTAL	9.78 ACRES	2.30 ACRES	8.19 ACRES	1.59 ACRES	2.06 ACRES	0.24 ACRES

ALTERNATIVE 3.2
EXHIBIT 3.2-3
STREAM RESTORATION



<u>STREAM RESTORATION</u>	<u>TEMPORARY IMPACT DURING RESTORATION</u>
4.39 ACRES	14.44 ACRES

ALTERNATIVE 3.2
EXHIBIT 3.2-4
SOUTHERN UTILITY CROSSING

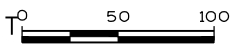


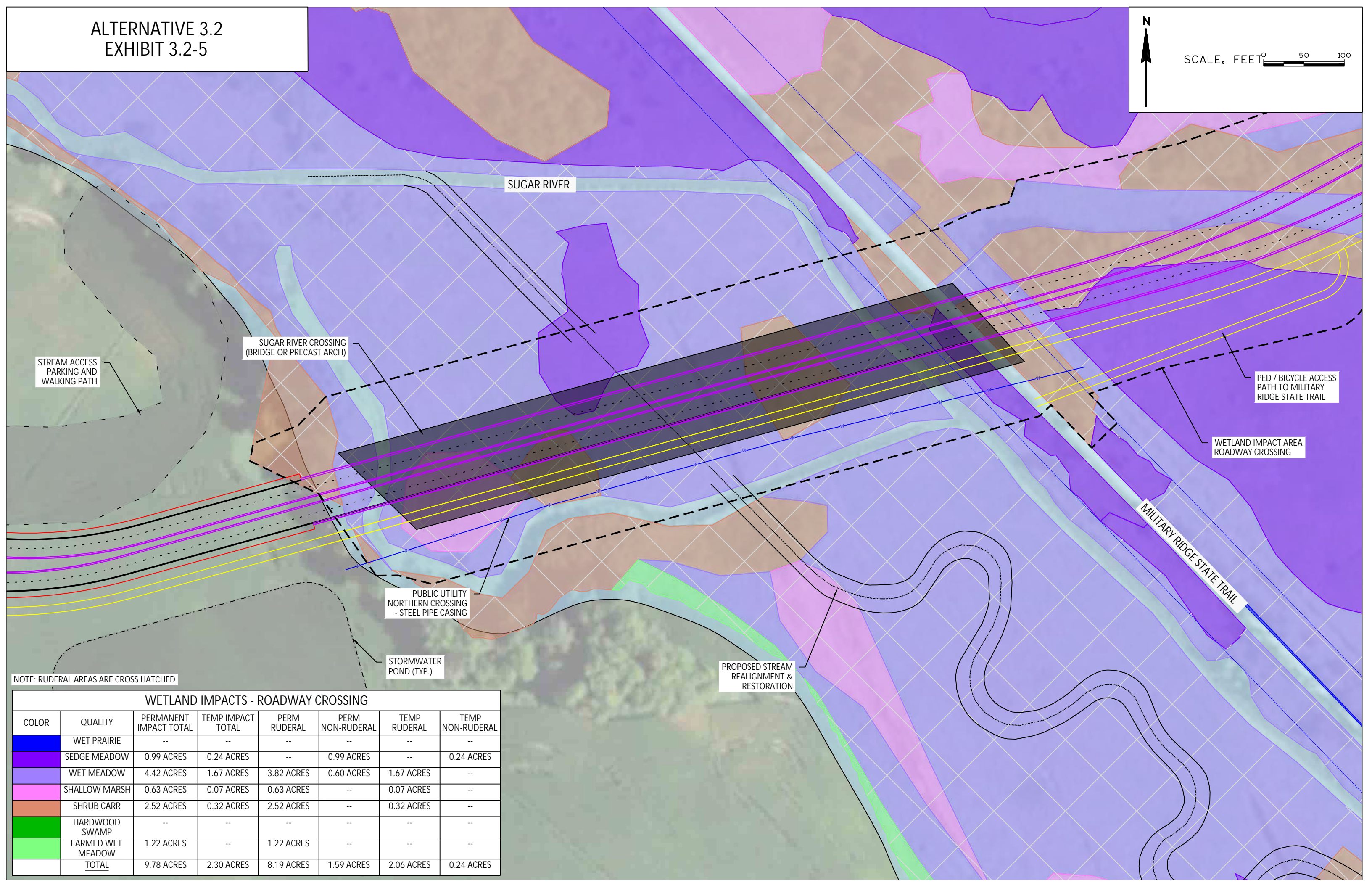
NOTE: RUDERAL AREAS ARE CROSS HATCHED

WETLAND IMPACTS - SOUTHERN UTILITY CROSSING				
COLOR	QUALITY	IMPACT TOTAL	TEMP RUDERAL	TEMP NON-RUDERAL
	WET PRAIRIE	0.01 ACRES	--	0.01 ACRES
	WET MEADOW	1.06 ACRES	1.06 ACRES	--
	SHRUB CARR	0.02 ACRES	0.02 ACRES	--
	FARMED WET MEADOW	0.46 ACRES	0.46 ACRES	--
	TOTAL	1.55 ACRES	1.54 ACRES	0.01 ACRES

ALTERNATIVE 3.2
EXHIBIT 3.2-5

N

SCALE, FEET 



STREAM ACCESS
PARKING AND
WALKING PATH

SUGAR RIVER CROSSING
(BRIDGE OR PRECAST ARCH)

PUBLIC UTILITY
NORTHERN CROSSING
- STEEL PIPE CASING

STORMWATER
POND (TYP.)

PROPOSED STREAM
REALIGNMENT &
RESTORATION

PED / BICYCLE ACCESS
PATH TO MILITARY
RIDGE STATE TRAIL








WETLAND IMPACT AREA
ROADWAY CROSSING

MILITARY RIDGE STATE TRAIL

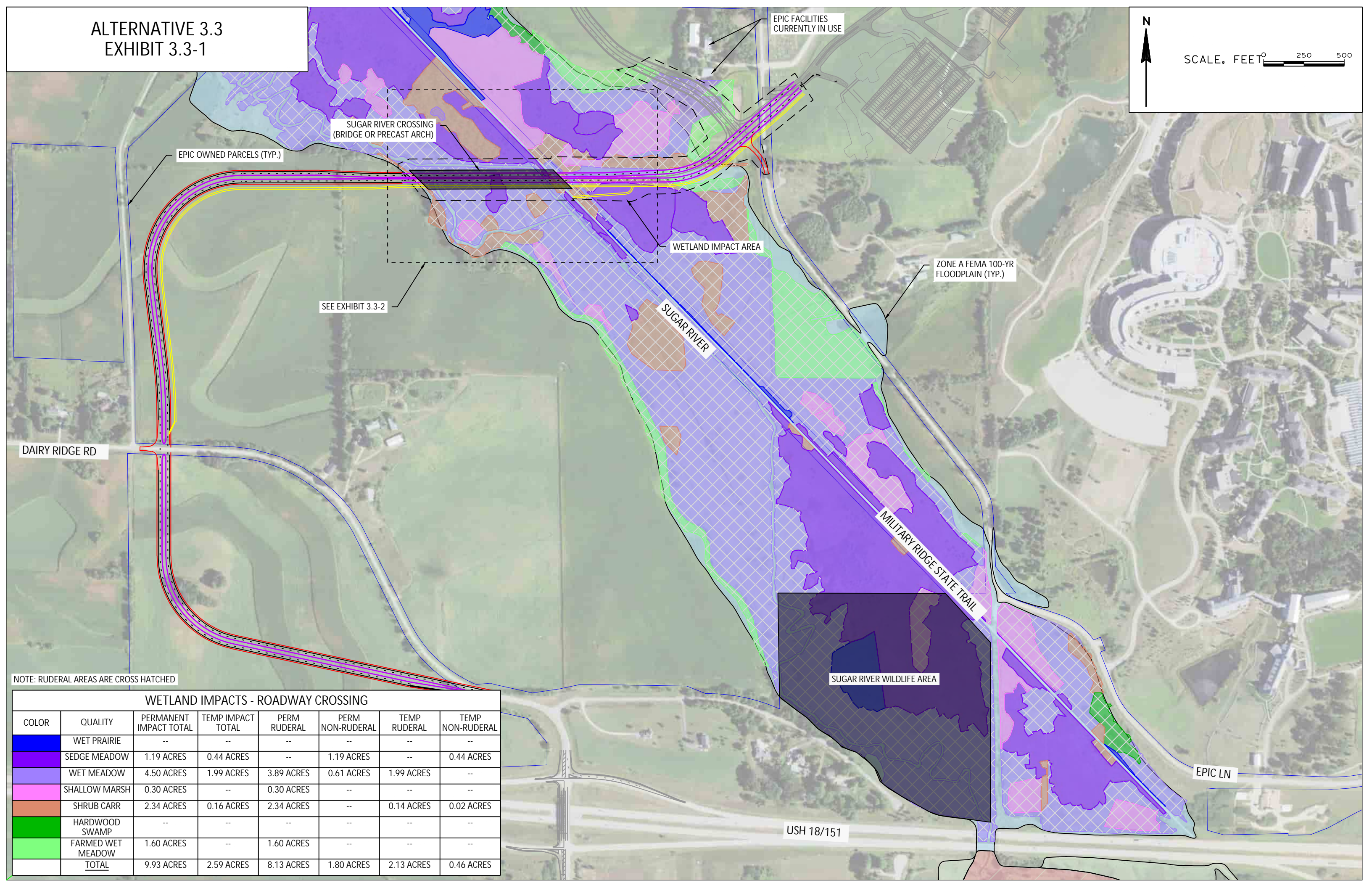
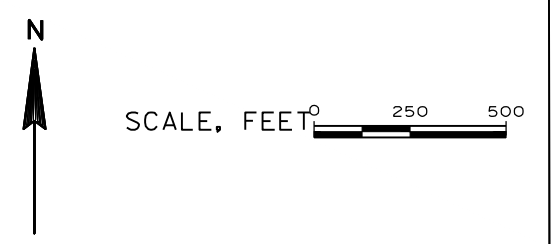
SUGAR RIVER

NOTE: RUDERAL AREAS ARE CROSS HATCHED

WETLAND IMPACTS - ROADWAY CROSSING

COLOR	QUALITY	PERMANENT IMPACT TOTAL	TEMP IMPACT TOTAL	PERM RUDERAL	PERM NON-RUDERAL	TEMP RUDERAL	TEMP NON-RUDERAL
	WET PRAIRIE	--	--	--	--	--	--
	SEDGE MEADOW	0.99 ACRES	0.24 ACRES	--	0.99 ACRES	--	0.24 ACRES
	WET MEADOW	4.42 ACRES	1.67 ACRES	3.82 ACRES	0.60 ACRES	1.67 ACRES	--
	SHALLOW MARSH	0.63 ACRES	0.07 ACRES	0.63 ACRES	--	0.07 ACRES	--
	SHRUB CARR	2.52 ACRES	0.32 ACRES	2.52 ACRES	--	0.32 ACRES	--
	HARDWOOD SWAMP	--	--	--	--	--	--
	FARMED WET MEADOW	1.22 ACRES	--	1.22 ACRES	--	--	--
	TOTAL	9.78 ACRES	2.30 ACRES	8.19 ACRES	1.59 ACRES	2.06 ACRES	0.24 ACRES

ALTERNATIVE 3.3
EXHIBIT 3.3-1



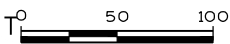
NOTE: RUDERAL AREAS ARE CROSS HATCHED

WETLAND IMPACTS - ROADWAY CROSSING

COLOR	QUALITY	PERMANENT IMPACT TOTAL	TEMP IMPACT TOTAL	PERM RUDERAL	PERM NON-RUDERAL	TEMP RUDERAL	TEMP NON-RUDERAL
Blue	WET PRAIRIE	--	--	--	--	--	--
Purple	SEDGE MEADOW	1.19 ACRES	0.44 ACRES	--	1.19 ACRES	--	0.44 ACRES
Light Purple	WET MEADOW	4.50 ACRES	1.99 ACRES	3.89 ACRES	0.61 ACRES	1.99 ACRES	--
Pink	SHALLOW MARSH	0.30 ACRES	--	0.30 ACRES	--	--	--
Orange	SHRUB CARR	2.34 ACRES	0.16 ACRES	2.34 ACRES	--	0.14 ACRES	0.02 ACRES
Green	HARDWOOD SWAMP	--	--	--	--	--	--
Light Green	FARMED WET MEADOW	1.60 ACRES	--	1.60 ACRES	--	--	--
	TOTAL	9.93 ACRES	2.59 ACRES	8.13 ACRES	1.80 ACRES	2.13 ACRES	0.46 ACRES

ALTERNATIVE 3.3
EXHIBIT 3.3-2

N

SCALE, FEET 

SUGAR RIVER CROSSING
(BRIDGE OR PRECAST ARCH)








SUGAR RIVER

WETLAND IMPACT AREA

MILITARY RIDGE STATE TRAIL

NOTE: RUDERAL AREAS ARE CROSS HATCHED

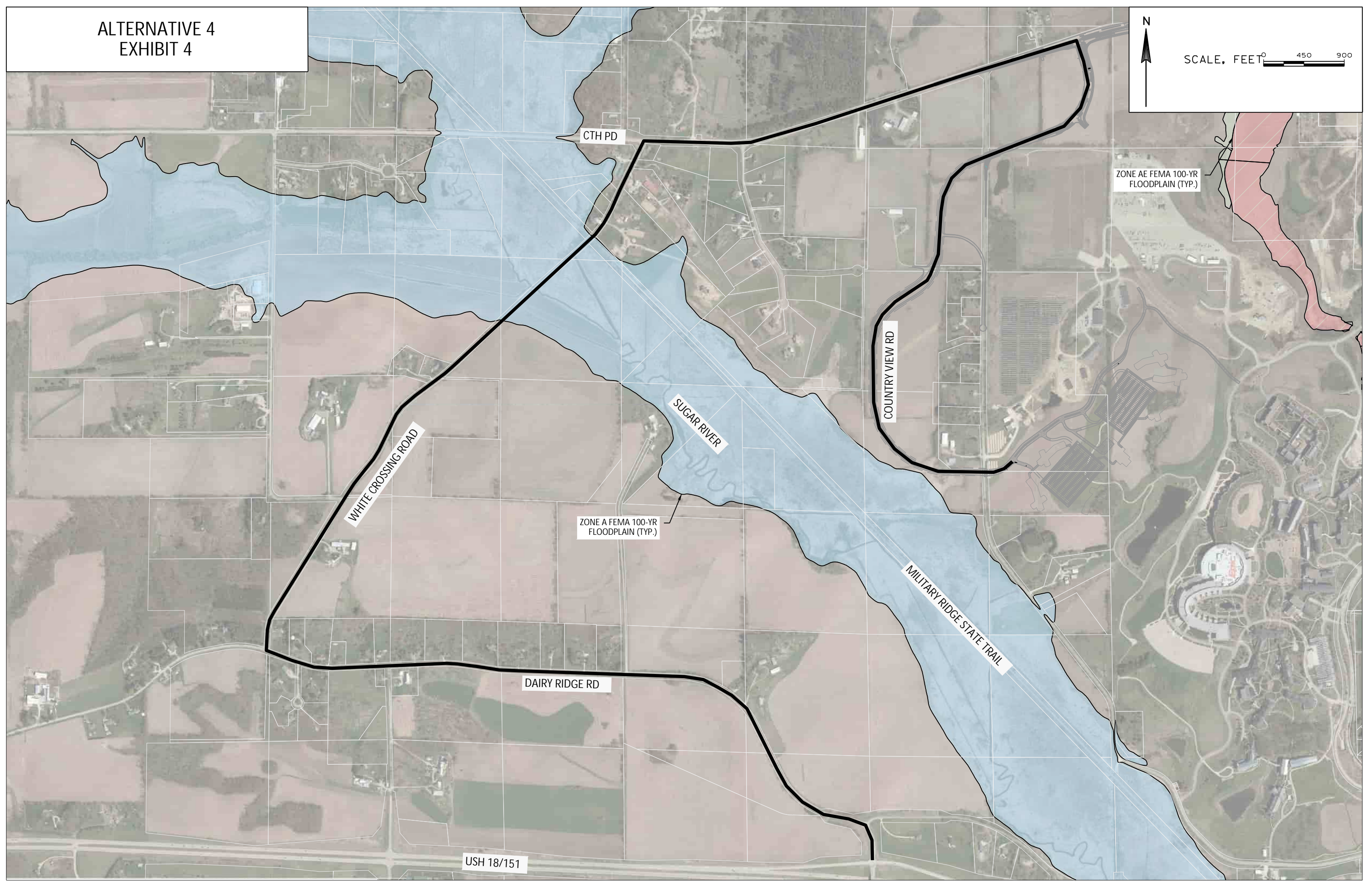
WETLAND IMPACTS - ROADWAY CROSSING

COLOR	QUALITY	PERMANENT IMPACT TOTAL	TEMP IMPACT TOTAL	PERM RUDERAL	PERM NON-RUDERAL	TEMP RUDERAL	TEMP NON-RUDERAL
	WET PRAIRIE	--	--	--	--	--	--
	SEDGE MEADOW	1.19 ACRES	0.44 ACRES	--	1.19 ACRES	--	0.44 ACRES
	WET MEADOW	4.50 ACRES	1.99 ACRES	3.89 ACRES	0.61 ACRES	1.99 ACRES	--
	SHALLOW MARSH	0.30 ACRES	--	0.30 ACRES	--	--	--
	SHRUB CARR	2.34 ACRES	0.16 ACRES	2.34 ACRES	--	0.14 ACRES	0.02 ACRES
	HARDWOOD SWAMP	--	--	--	--	--	--
	FARMED WET MEADOW	1.60 ACRES	--	1.60 ACRES	--	--	--
	TOTAL	9.93 ACRES	2.59 ACRES	8.13 ACRES	1.80 ACRES	2.13 ACRES	0.46 ACRES

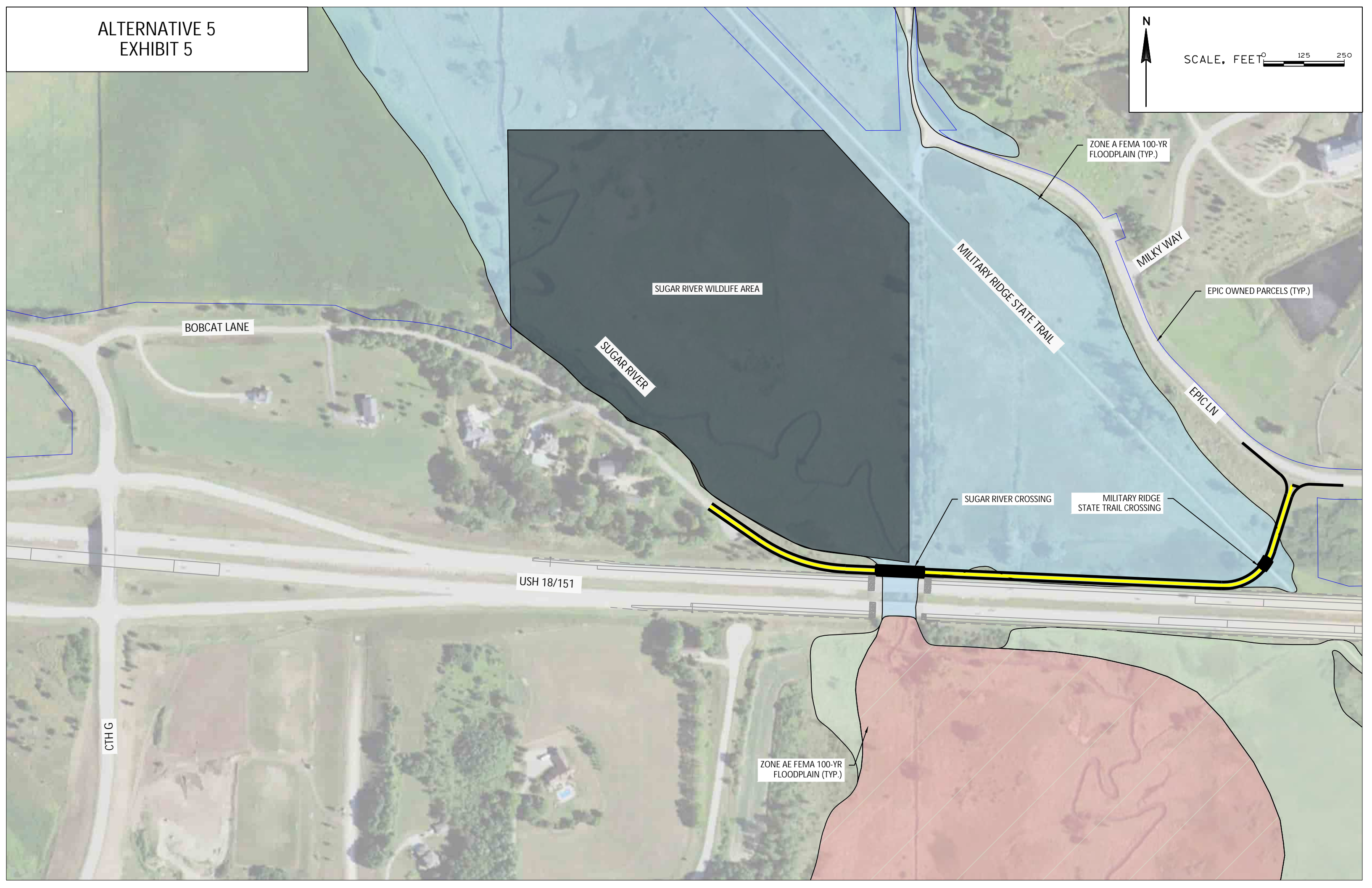
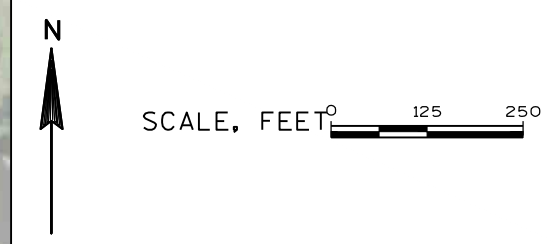
ALTERNATIVE 4
EXHIBIT 4

N

SCALE, FEET 0 450 900



ALTERNATIVE 5
EXHIBIT 5



BOBCAT LANE

SUGAR RIVER WILDLIFE AREA

SUGAR RIVER

ZONE A FEMA 100-YR FLOODPLAIN (TYP.)

MILITARY RIDGE STATE TRAIL

MILKY WAY

EPIC OWNED PARCELS (TYP.)

EPIC LN

SUGAR RIVER CROSSING

MILITARY RIDGE STATE TRAIL CROSSING

USH 18/151

CTH G

ZONE AE FEMA 100-YR FLOODPLAIN (TYP.)