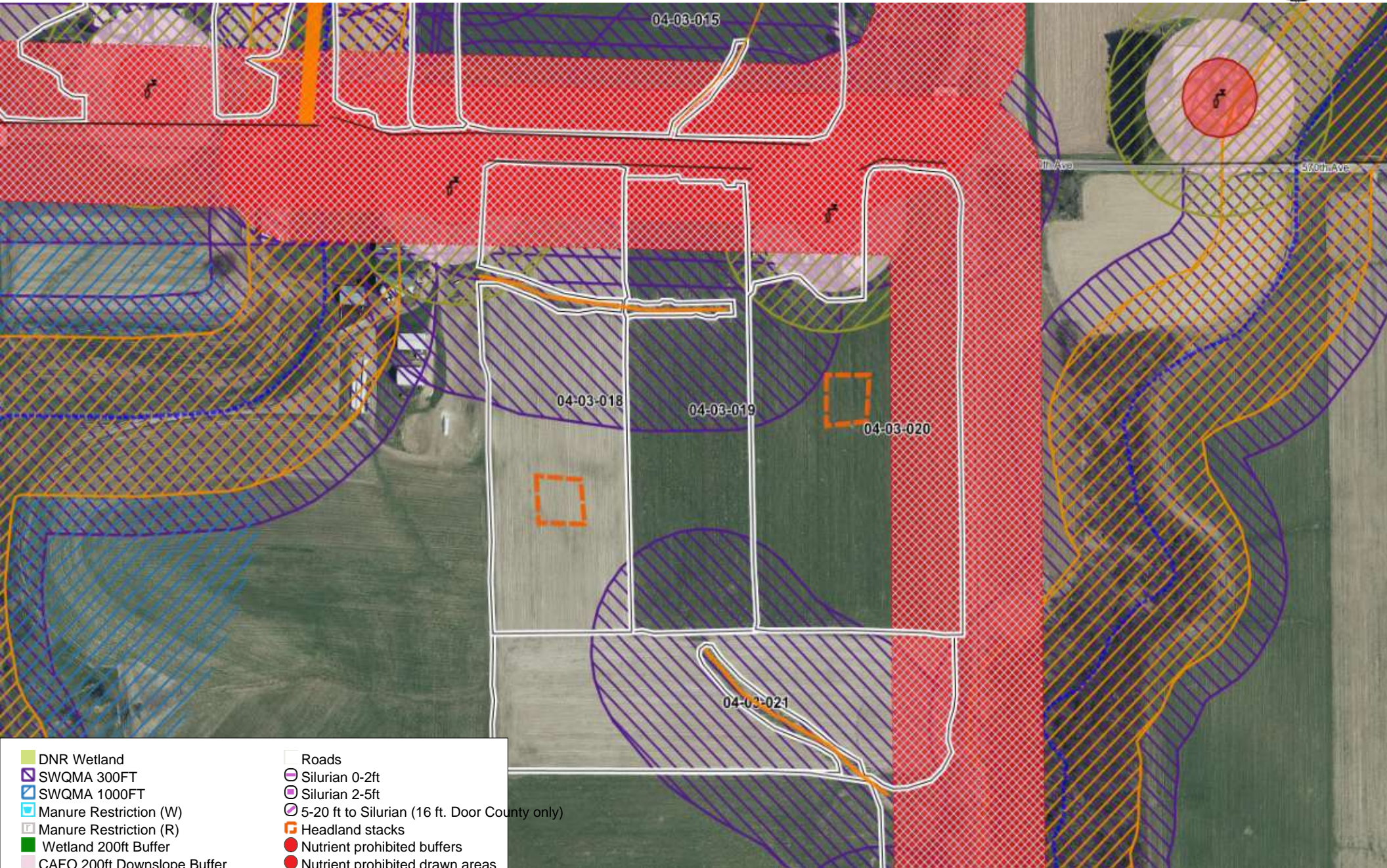


- | | |
|-------------------------------|-----------------------------------------------|
| DNR Wetland | Township/Range |
| SWQMA 300FT | Roads |
| SWQMA 1000FT | Silurian 0-2ft |
| Manure Restriction (W) | Silurian 2-5ft |
| Manure Restriction (R) | 5-20 ft to Silurian (16 ft. Door County only) |
| Bedrock depth <5ft | Headland stacks |
| Wetland 200ft Buffer | Nutrient prohibited buffers |
| CAFO 200ft Downslope Buffer | Nutrient prohibited draw areas |
| Channelized Flow 200ft Buffer | Nutrient prohibited winter only |
| Direct Conduit to GW 300ft | Fields |
| Intermittent Streams | Grassed waterway |
| Waterbodies | Ditch |
| Counties | |

04-03-004



- | | |
|-------------------------------|-----------------------------------------------|
| DNR Wetland | Roads |
| SWQMA 300FT | Silurian 0-2ft |
| SWQMA 1000FT | Silurian 2-5ft |
| Manure Restriction (W) | 5-20 ft to Silurian (16 ft. Door County only) |
| Manure Restriction (R) | Headland stacks |
| Wetland 200ft Buffer | Nutrient prohibited buffers |
| CAFO 200ft Downslope Buffer | Nutrient prohibited drawn areas |
| Channelized Flow 200ft Buffer | Nutrient prohibited winter only |
| Direct Conduit to GW 300ft | Fields |
| Intermittent Streams | Grassed waterway |
| Waterbodies | Ditch |
| Counties | Drinking well |
| Township/Range | |