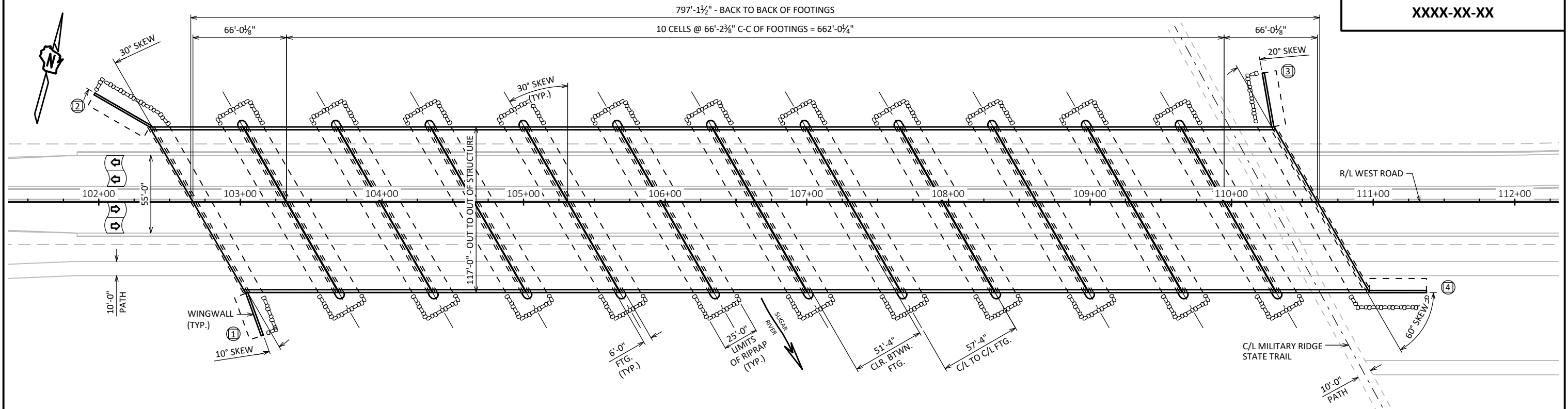


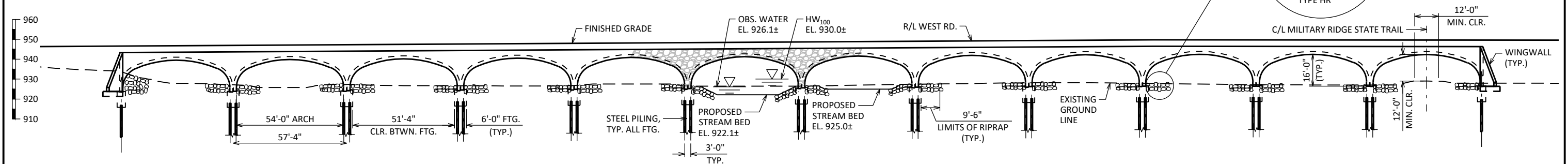
(X) INDICATES WING NUMBER

STATE PROJECT NUMBER

XXXX-XX-XX



### PLAN



### ELEVATION

LOOKING NORTHWEST - PARALLEL TO PATH  
DIMENSIONS SHOWN NORMAL TO ARCH UNLESS NOTED OTHERWISE

### DESIGN DATA

**LIVE LOAD:**  
 DESIGN LOADING: HL-93  
 INVENTORY RATING: RF =  
 OPERATING RATING: RF =  
 WISCONSIN STANDARD PERMIT VEHICLE (WIS-SPV): XXX (KIPS)

STRUCTURE IS DESIGNED FOR A FUTURE WEARING SURFACE OF 20 POUNDS PER SQUARE FOOT.

**EARTH LOAD:**  
DESIGNED FOR X.X TO X.X FT. OF FILL.

**MATERIAL PROPERTIES:**  
 CONCRETE MASONRY:  
 SUPERSTRUCTURE  $f'_c = 4,000$  PSI  
 ALL OTHER  $f'_c = 3,500$  PSI

BAR STEEL REINFORCEMENT  
GRADE 60  $f_y = 60,000$  PSI

### TRAFFIC DATA

**FEATURE ON:**  
 ADT = ( )  
 R.D.S. = MPH

### FOUNDATION DATA

FOOTINGS TO BE SUPPORTED ON XXXXXX PILING DRIVEN TO A REQUIRED DRIVING RESISTANCE OF XXX TONS \*\* PER PILE AS DETERMINED BY THE MODIFIED GATES DYNAMIC FORMULA.  
 ESTIMATED XX'-0" LONG.  
 ESTIMATED XX'-0" LONG.

\*\*THE FACTORED AXIAL RESISTANCE OF PILES IN COMPRESSION USED FOR DESIGN IS THE REQUIRED DRIVING RESISTANCE MULTIPLIED BY A RESISTANCE FACTOR OF 0.5 USING MODIFIED GATES TO DETERMINE PILE CAPACITY.

### HYDRAULIC DATA

**100-YEAR FREQUENCY:**  
 $Q_{100} =$  C.F.S.  
 $V_{100} =$  F.P.S.  
 $HW_{100} =$  EL.  
 WATERWAY AREA = SQ. FT.  
 DRAINAGE AREA = SQ. MI.  
 ROADWAY OVERTOPPING = N/A  
 SCOUR CRITICAL CODE =

**2-YEAR FREQUENCY:**  
 $Q_2 =$  C.F.S.  
 $V_2 =$  F.P.S.  
 $HW_2 =$  EL.

### LIST OF DRAWINGS:

1. GENERAL PLAN
2. TYPICAL SECTIONS, QUANTITIES & NOTES

**STRUCTURE DESIGN CONTACT:**  
 BUREAU OF STRUCTURES:  
 AARON BONK (608) 261-0261

CONSULTANT:  
 MATTHEW KRIPPNER (608) 334-3850

NO.	DATE	REVISION	BY

# AECOM

STATE OF WISCONSIN  
DEPARTMENT OF TRANSPORTATION

ACCEPTED \_\_\_\_\_ DATE \_\_\_\_\_  
 CHIEF STRUCTURES DESIGN ENGINEER

## STRUCTURE B-XX-XXXX

### WEST ROAD OVER MILITARY RIDGE STATE TRAIL

COUNTY DANE TOWN VERONA

DESIGN SPEC.  
 AASHTO LRFD BRIDGE DESIGN SPECIFICATION

DESIGNED BY	DESIGNED CK'D	MSK	DRAWN BY	DCH	PLANS CK'D	MSK
-------------	---------------	-----	----------	-----	------------	-----

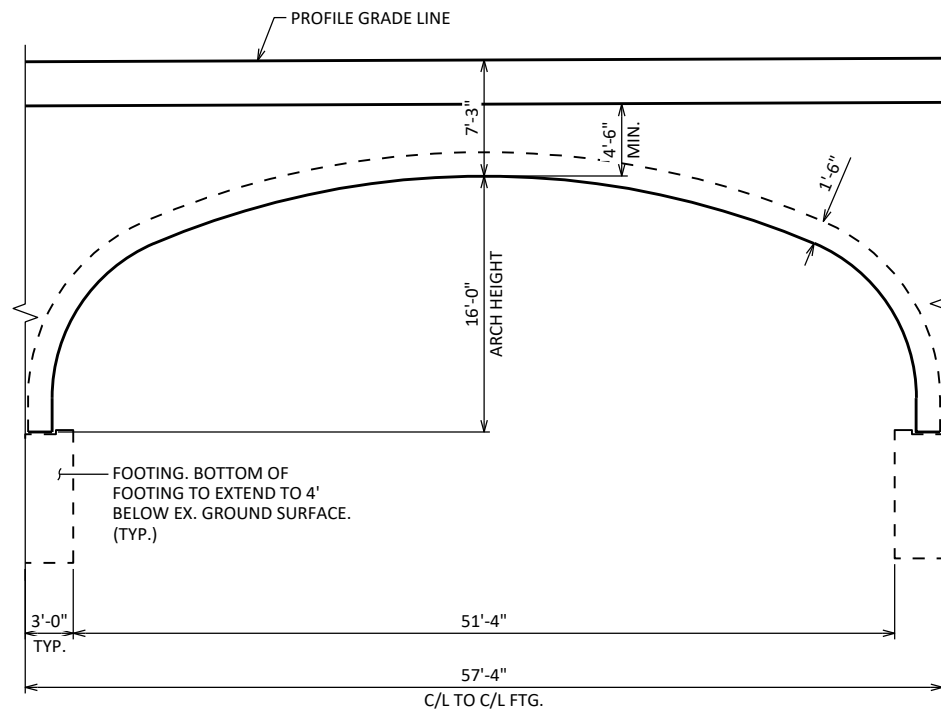
## GENERAL PLAN

SHEET 1 OF 2

8

8

SCALE =



**TYPICAL SECTION OF ARCH SEGMENT**

NOTE: FOOTING PILING NOT SHOWN FOR CLARITY.

**GENERAL NOTES**

DRAWINGS SHALL NOT BE SCALED.

BAR STEEL REINFORCEMENT SHALL BE EMBEDDED 2" CLEAR UNLESS OTHERWISE SHOWN OR NOTED.

THE FIRST OR FIRST TWO DIGITS OF THE BAR MARK SIGNIFIES THE BAR SIZE.

BEVEL EXPOSED EDGES OF CONCRETE 3/4" UNLESS OTHERWISE NOTED.

THE UPPER LIMITS OF "EXCAVATION FOR STRUCTURES BRIDGES B-XX-XXX" SHALL BE THE EXISTING GROUNDLINE.

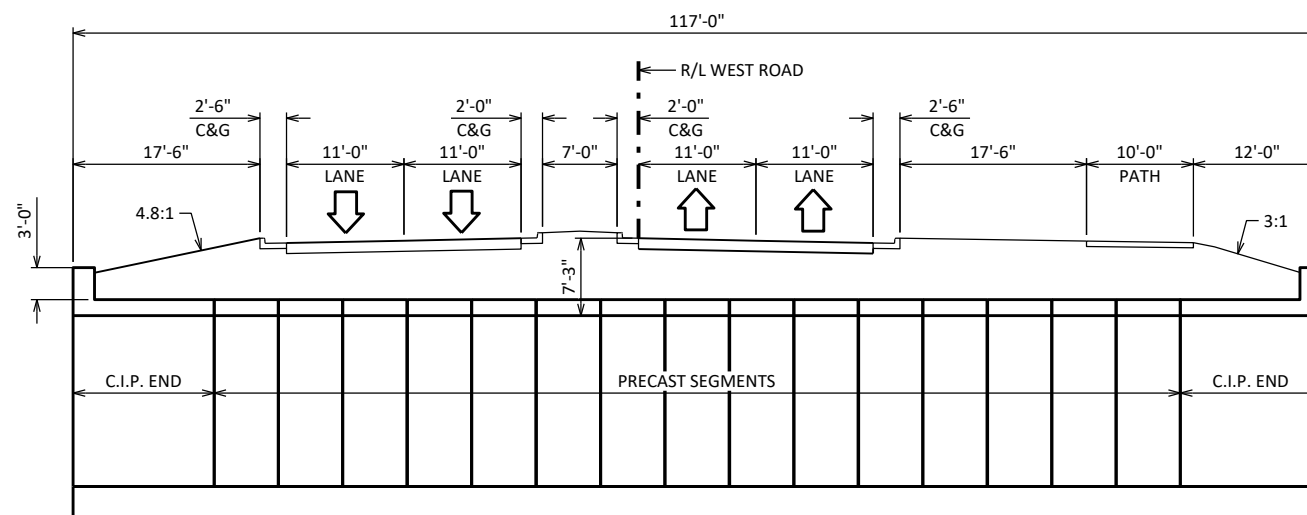
ALL VOLUME WHICH CANNOT BE PLACED BEFORE STRUCTURE CONSTRUCTION AND NOT OCCUPIED BY THE NEW STRUCTURE SHALL BE BACKFILLED WITH STRUCTURE BACKFILL WITHIN THE LENGTH OF THE STRUCTURE INCLUDING THE FULL RETAINING WING WALLS.

PLACE 18" (MIN.) WIDE SHEET OF "RUBBERIZED MEMBRANE WATERPROOFING" OVER ALL CONSTRUCTION JOINTS BETWEEN PRECAST & CAST-IN-PLACE ARCH SEGMENTS.

THE CONTRACTOR MAY ELECT TO SUBSTITUTE #1 OR #2 CONCRETE COARSE AGGREGATE OR OTHER GRANULAR MATERIAL AS APPROVED BY THE FIELD ENGINEER, IN LIEU OF THE SELECT CRUSHED MATERIAL, TO BE UTILIZED AS A CONSTRUCTION PLATFORM FOR THE BOX. THE CONTRACTOR IS RESPONSIBLE FOR BASE STABILITY WITH ANY SUBSTITUTED MATERIAL.

**TOTAL ESTIMATED QUANTITIES**

BID ITEM NUMBER	BID ITEMS	UNIT	TOTALS
206.1001	EXCAVATION FOR STRUCTURES BRIDGES B-XX-XXX	EACH	--
210.2500	BACKFILL STRUCTURE TYPE B	TON	--
502.0100	CONCRETE MASONRY BRIDGES	CY	--
505.0400	BAR STEEL REINFORCEMENT HS STRUCTURES	LB	--
505.0600	BAR STEEL REINFORCEMENT HS COATED STRUCTURES	LB	--
511.1200	TEMPORARY SHORING B-XX-XXX	SF	--
516.0500	RUBBERIZED MEMBRANE WATERPROOFING	SY	--
550.XXXX	PILING STEEL XXXXXXXX	LF	--
645.0120	GEOTEXTILE TYPE HR	SY	--
	NON-BID ITEMS		
	FILLER	SIZE	1/2" 3/4"



**TYPICAL SECTION THRU STRUCTURE**

LOOKING PARALLEL TO ROADWAY

NO.	DATE	REVISION	BY
STATE OF WISCONSIN DEPARTMENT OF TRANSPORTATION			
<b>STRUCTURE B-XX-XXXX</b>			
DRAWN BY		PLANS CK'D	
DCH		MSK	
<b>TYPICAL SECTIONS, QUANTITIES &amp; NOTES</b>			SHEET 2 OF 2

SCALE =