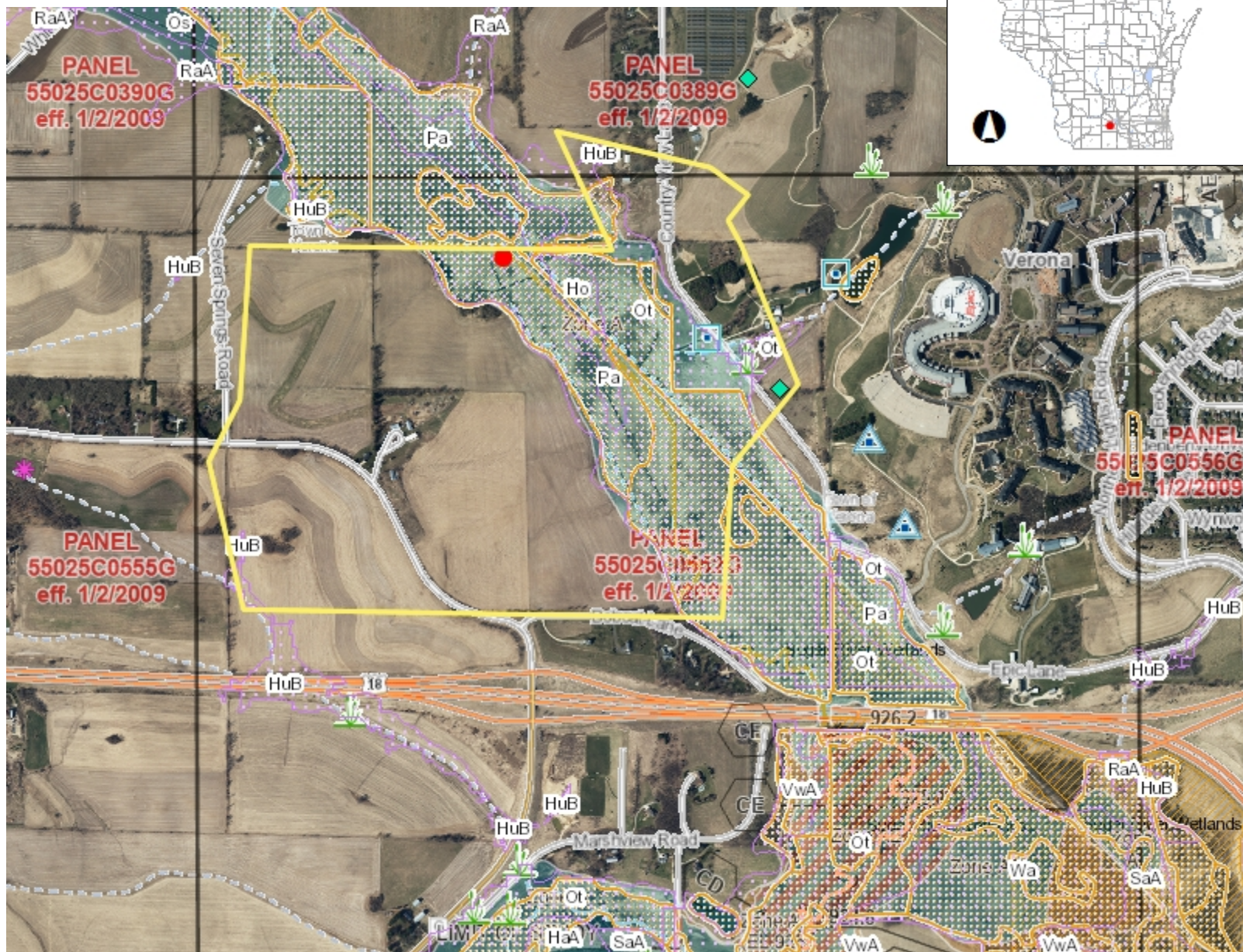




Surface Water Data Viewer Map



- ### Legend
- Wetland Indicators
 - Lake Class Areas
 - Riverine/ditch Class Areas
 - Wetland Class Areas
 - Wetland Class Points
 - Dammed pond
 - Excavated pond
 - Filled/draind wetland
 - Wetland too small to delineate
 - Filled excavated pond
 - Filled Points
 - Wetland Class Areas
 - Filled Areas
 - Lake Class Areas
 - Riverine/ditch Class Areas
 - Wetland Class Areas
 - Wetland Class Points
 - Dammed pond
 - Excavated pond
 - Filled/draind wetland
 - Wetland too small to delineate
 - Filled excavated pond
 - Filled Points
 - Wetland Class Areas
 - Filled Areas
 - 2D Water Surface Elevation Grid High : 937.629
 - Low : 853.184
 - Wild Rice River and Stream Lines
 - Wild Rice Lake Polygons
 - Floodplain Analysis Lines
 - Case by Case Analysis for



NAD_1983_HARN_Wisconsin_TM

1: 15,840

DISCLAIMER: The information shown on these maps has been obtained from various sources, and are of varying age, reliability and resolution. These maps are not intended to be used for navigation, nor are these maps an authoritative source of information about legal land ownership or public access. No warranty, expressed or implied, is made regarding accuracy, applicability for a particular use, completeness, or legality of the information depicted on this map. For more information, see the DNR Legal Notices web page: <http://dnr.wi.gov/legal/>

Notes