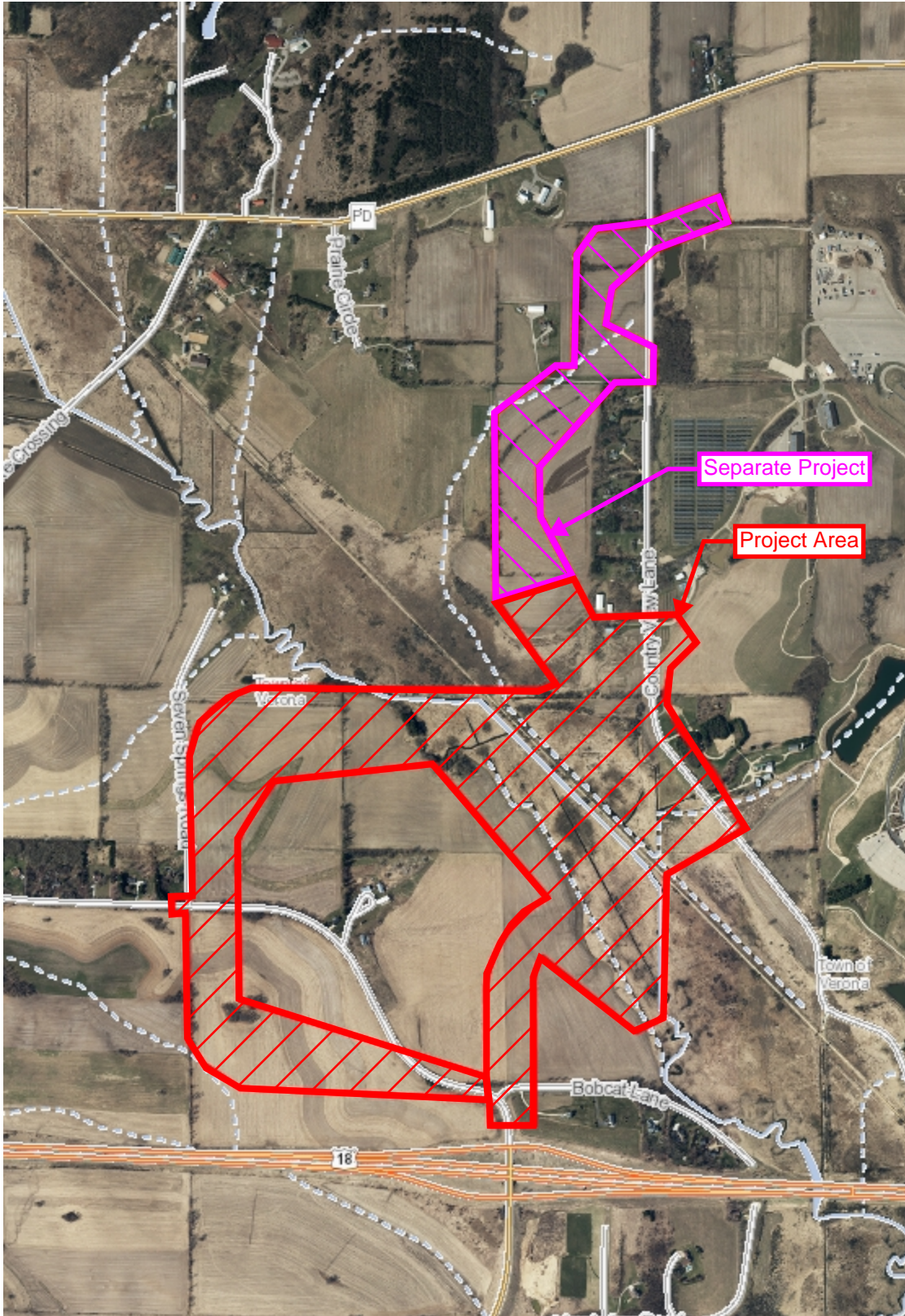




Surface Water Data Viewer Map - Aerial Map



Legend

- Municipality
- State Boundaries
- County Boundaries
- Major Roads**
 - Interstate Highway
 - State Highway
 - US Highway
- County and Local Roads**
 - County HWY
 - Local Road
- Railroads
- Tribal Lands
- Rivers and Streams
- Intermittent Streams
- Lakes and Open water

0.5 0 0.25 0.5 Miles

1: 15,840

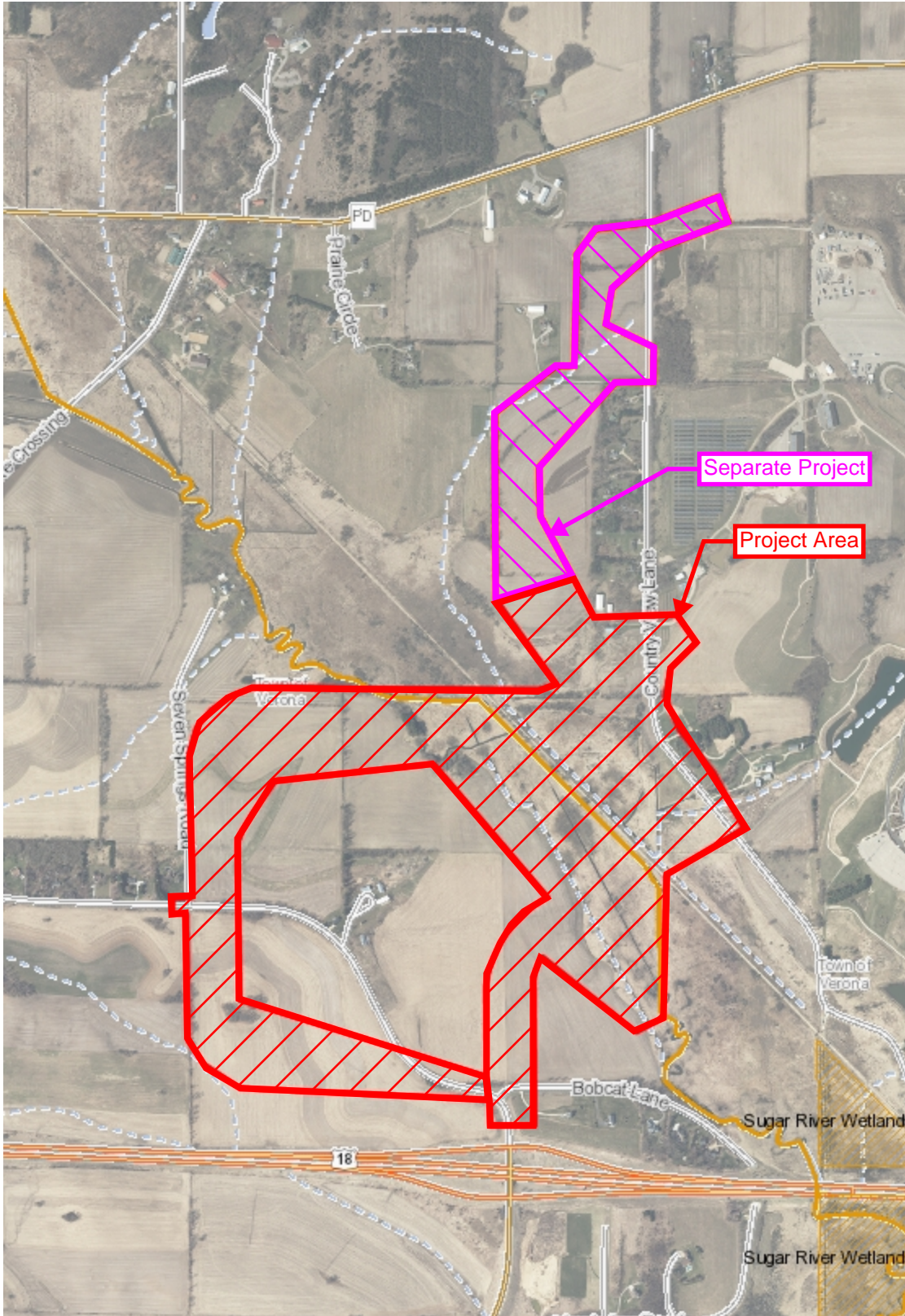
NAD_1983_HARN_Wisconsin_TM

DISCLAIMER: The information shown on these maps has been obtained from various sources, and are of varying age, reliability and resolution. These maps are not intended to be used for navigation, nor are these maps an authoritative source of information about legal land ownership or public access. No warranty, expressed or implied, is made regarding accuracy, applicability for a particular use, completeness, or legality of the information depicted on this map. For more information, see the DNR Legal Notices web page: <http://dnr.wi.gov/legal/>

Notes



Surface Water Data Viewer Map - Designated Waterways Map



Legend

- PNW-ASNRI Sensitive Areas of Lakes
- PNW-ASNRI Wild and Scenic Rivers
- PNW-ASNRI Outstanding and Exceptional Streams
- PNW-ASNRI Trout Streams
- PNW-ASNRI Wild Rice Streams
- PNW-ASNRI Outstanding and Exceptional Lakes
- PNW-ASNRI Special Area Management Plan Streams
- PNW-ASNRI Special Wetlands Inventory Study Streams
- PNW-ASNRI Coastal Wisconsin Wetlands Streams
- PNW-ASNRI Special Area Management Plan Areas
- PNW-ASNRI Special Wetlands Inventory Study Areas
- PNW-ASNRI Coastal Wisconsin Wetlands Areas
- PNW-ASNRI Wild Rice Areas
- PNW-ASNRI Trout Spring Ponds
- PNW-ASNRI State Natural Areas
- PNW-PRF Other Public Rights Features
- PNW Musky Streams
- PNW Sturgeon Streams
- PNW Musky Areas
- PNW Sturgeon Areas
- PNW Walleye Areas
- PNW Lakes Less Than 50 Acres
- Municipality
- State Boundaries

0.5 0 0.25 0.5 Miles

1: 15,840

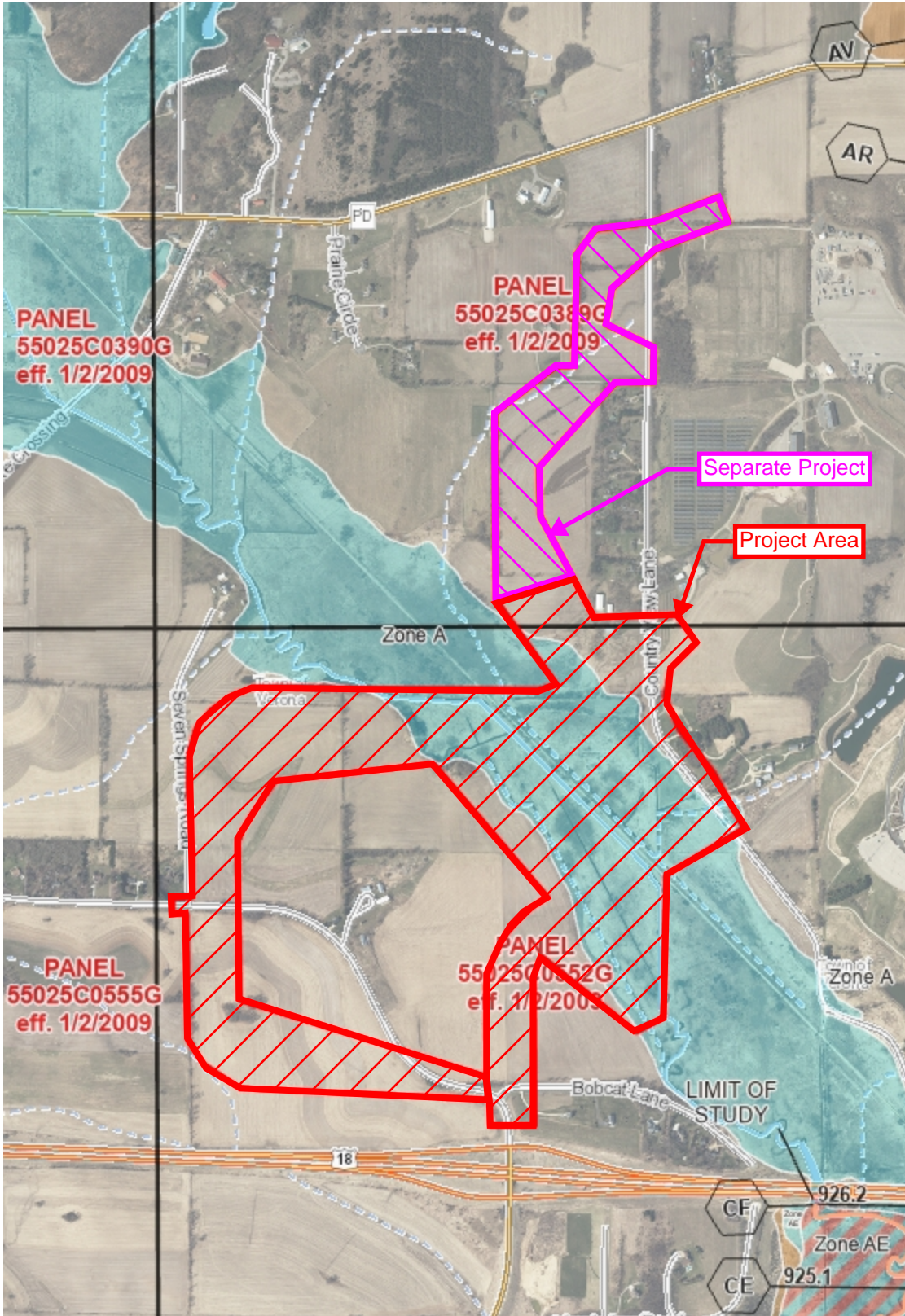
NAD_1983_HARN_Wisconsin_TM

DISCLAIMER: The information shown on these maps has been obtained from various sources, and are of varying age, reliability and resolution. These maps are not intended to be used for navigation, nor are these maps an authoritative source of information about legal land ownership or public access. No warranty, expressed or implied, is made regarding accuracy, applicability for a particular use, completeness, or legality of the information depicted on this map. For more information, see the DNR Legal Notices web page: <http://dnr.wi.gov/legal/>

Notes



Surface Water Data Viewer Map - Floodplain Map



Legend

2D Water Surface Elevation Grid

High : 937.629

Low : 853.184

Dams

- Dam
- FERC and FERC Exempt Dam
- Cranberry Dam
- Removed Dam
- Structure not on Waterway
- <all other values>

Levees

Geomarks

Floodplain Analysis Lines

- Case by Case Analysis for Development in Floodplain
- Dam Failure Analysis
- Encroachment Analysis
- Flood Insurance Study
- Flood Storage Analysis
- Floodplain Study (Locally Funded)
- Hydrology/Hydraulics developed at a Dam
- <all other values>

Floodplain Analysis Catchments

Floodplain Analysis Points

- Case by Case Analysis for Development in Floodplain
- Dam Failure Analysis
- Encroachment Analysis
- Flood Insurance Study
- Flood Storage Analysis
- Floodplain Study (Locally Funded)
- Hydrology/Hydraulics developed at a Dam
- <all other values>

Record Flood Levels

FERC Project Area Boundaries

0.5 0 0.25 0.5 Miles

1: 15,840

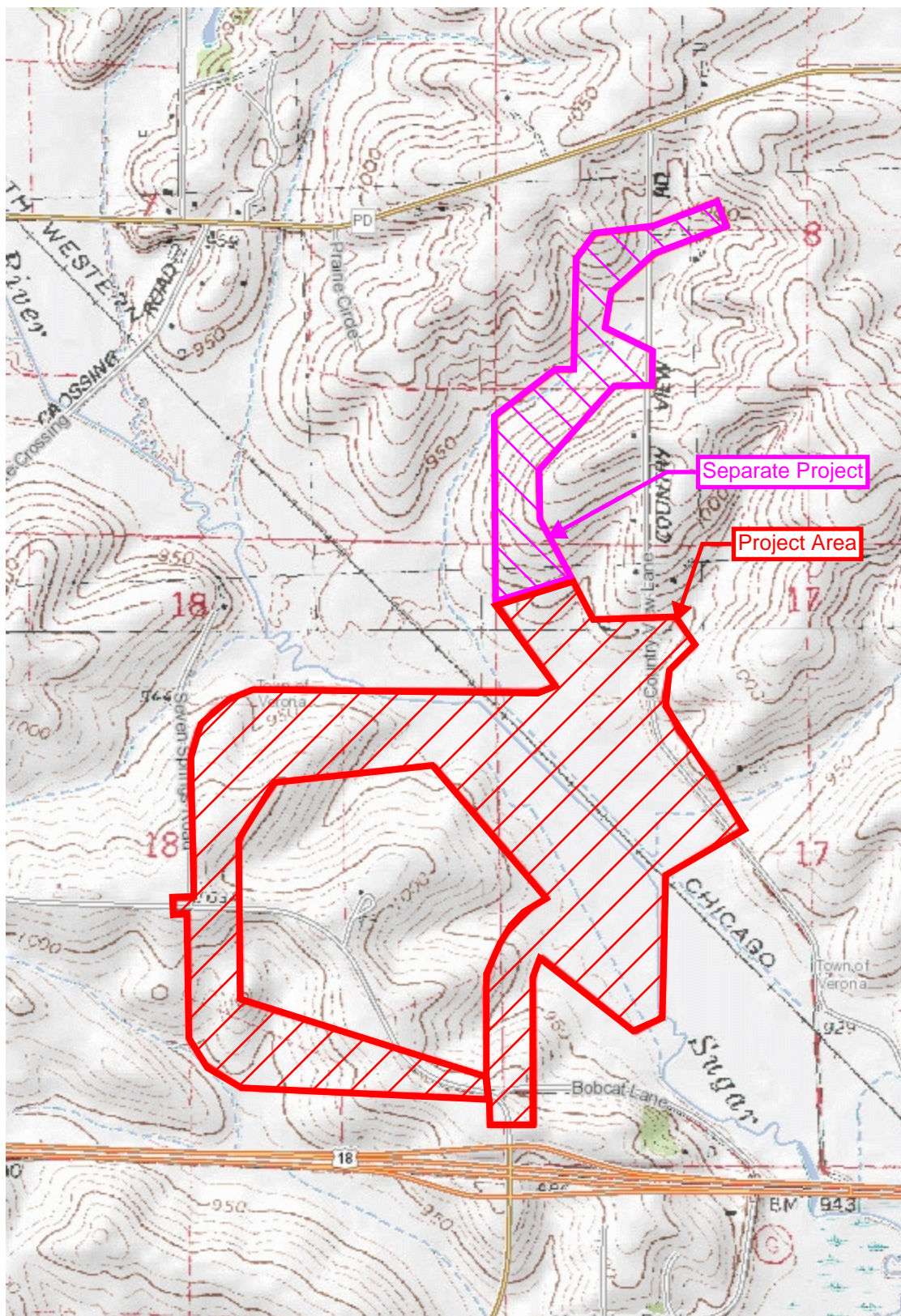
NAD_1983_HARN_Wisconsin_TM

DISCLAIMER: The information shown on these maps has been obtained from various sources, and are of varying age, reliability and resolution. These maps are not intended to be used for navigation, nor are these maps an authoritative source of information about legal land ownership or public access. No warranty, expressed or implied, is made regarding accuracy, applicability for a particular use, completeness, or legality of the information depicted on this map. For more information, see the DNR Legal Notices web page: <http://dnr.wi.gov/legal/>

Notes



Surface Water Data Viewer Map - Topographic Map



Legend

- Municipality
- State Boundaries
- County Boundaries
- Major Roads**
 - Interstate Highway
 - State Highway
 - US Highway
- County and Local Roads**
 - County HWY
 - Local Road
- Railroads
- Tribal Lands
- Rivers and Streams
- Intermittent Streams
- Lakes and Open water

0.5 0 0.25 0.5 Miles

1: 15,840

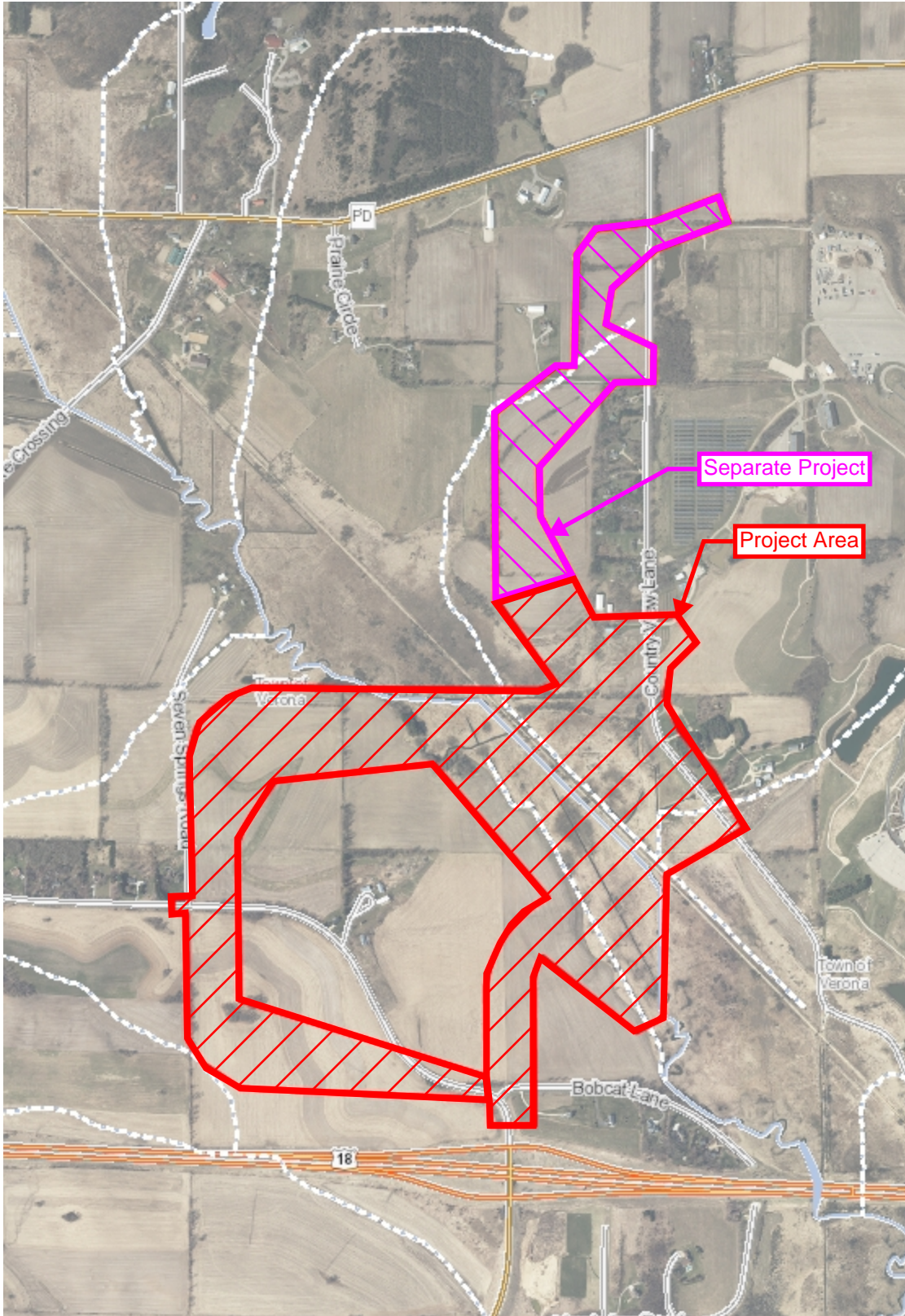
NAD_1983_HARN_Wisconsin_TM

DISCLAIMER: The information shown on these maps has been obtained from various sources, and are of varying age, reliability and resolution. These maps are not intended to be used for navigation, nor are these maps an authoritative source of information about legal land ownership or public access. No warranty, expressed or implied, is made regarding accuracy, applicability for a particular use, completeness, or legality of the information depicted on this map. For more information, see the DNR Legal Notices web page: <http://dnr.wi.gov/legal/>

Notes



Surface Water Data Viewer Map - Waterways Map



Legend

- Municipality
- State Boundaries
- County Boundaries
- Major Roads**
 - Interstate Highway
 - State Highway
 - US Highway
- County and Local Roads**
 - County HWY
 - Local Road
- Railroads
- Tribal Lands
- Rivers and Streams
- Intermittent Streams
- Lakes and Open water

0.5 0 0.25 0.5 Miles

1: 15,840

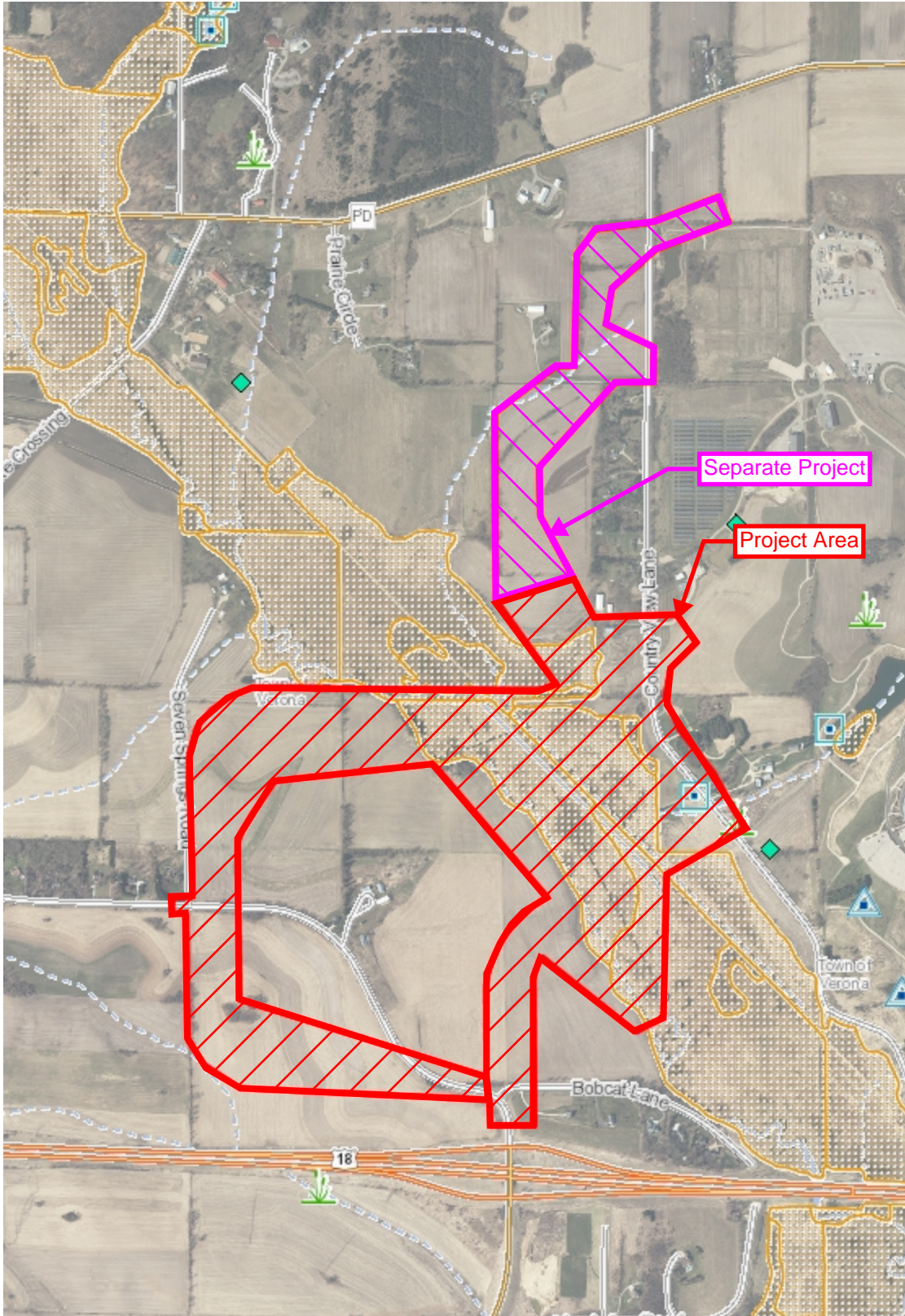
NAD_1983_HARN_Wisconsin_TM

DISCLAIMER: The information shown on these maps has been obtained from various sources, and are of varying age, reliability and resolution. These maps are not intended to be used for navigation, nor are these maps an authoritative source of information about legal land ownership or public access. No warranty, expressed or implied, is made regarding accuracy, applicability for a particular use, completeness, or legality of the information depicted on this map. For more information, see the DNR Legal Notices web page: <http://dnr.wi.gov/legal/>

Notes



Surface Water Data Viewer Map - Wisconsin Wetland Inventory (WWI) Map



Legend

- Lake Class Areas
- Riverine/ditch Class Areas
- Wetland Class Areas
- Wetland Class Points**
- Dammed pond
- Excavated pond
- Filled/draind wetland
- Wetland too small to delineate
- Filled excavated pond
- Filled Points
- Wetland Class Areas
- Filled Areas
- Lake Class Areas
- Riverine/ditch Class Areas
- Wetland Class Areas
- Wetland Class Points**
- Dammed pond
- Excavated pond
- Filled/draind wetland
- Wetland too small to delineate
- Filled excavated pond
- Filled Points
- Wetland Class Areas
- Filled Areas
- Wetland Identifications and Confirmations
- Municipality
- State Boundaries
- County Boundaries
- Major Roads**
- Interstate Highway
- State Highway
- US Highway
- County and Local Roads**
- County HWY
- Local Road
- Railroads
- Tribal Lands

0.5 0 0.25 0.5 Miles

1: 15,840

NAD_1983_HARN_Wisconsin_TM

DISCLAIMER: The information shown on these maps has been obtained from various sources, and are of varying age, reliability and resolution. These maps are not intended to be used for navigation, nor are these maps an authoritative source of information about legal land ownership or public access. No warranty, expressed or implied, is made regarding accuracy, applicability for a particular use, completeness, or legality of the information depicted on this map. For more information, see the DNR Legal Notices web page: <http://dnr.wi.gov/legal/>

Notes